

Mapperley Park news

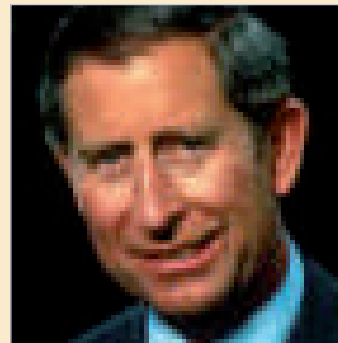
Mapperley Park Residents' Association Newsletter
No. 16 September 2009 Where sold £2.00

Art for Art's Sake

Shoppers might have been alarmed as they browsed the window display in a local butchers in Sherwood. For they came face-to-face with this giant pig face made from papier mache! The display, in Beedhams Butchers on Mansfield Road, was made by artist James Gant. It was one of many works of art shown in shops and businesses during Sherwood Art week. Full story on page 3.



Photo: Martine Hamilton Knight



Guess who's been
visiting my garden?

Contents

- 2 Local contacts
 - Coffee mornings
- 3 Art Week in Sherwood
- 5 Michael Johal's favourite recipe
- 5 Italian wines for Christmas
- 7 Return to Normandy beaches
- 8 Hockney exhibition in our new 'art space'
- 9 Residents' Association
- 10 Gardening Group
- 11 Highgrove gardens
- 11 Help needed for 2010 Garden Trail
- 12 Ballet, Boots and Bites
- 14 What's on in Nottingham
- 16 Free security aids
- 17 St John's Church re-opens
- 18 Damp cellar transformed
- 18 'Seasonal' flu vaccinations
- 19 Small ads & Services

Q. What is *Mapperley Park News*?

A. It's the Newsletter of the Mapperley Park Residents' Association, published twice a year and circulated free to every home and business within Mapperley Park. Copies also available for £2 from MJ News, 347 Mansfield Road, Carrington or from the editors (see p2). If you live in Mapperley Park and did not receive a copy in September please contact the editors or a member of the MPRA committee.

The Residents' Association

Message from the retiring chairman and the new chairman on page 12

How to join the Association. Subscription form page 20

Directory of Useful Contacts

MAPPERLEY PARK NEWS

Editorial Team Suma Harding e-mail: mapperleypark@trent.plus.com
Sharon Jamieson email: jamfamfive@aol.com
Sue Ahsan email: sue@davidbowie.com
Annette Blair email: theblairs@waitrose.com

Correspondence to The Editors
c/o 31 Lucknow Drive, Mapperley Park, Nottingham NG3 5EU
Advertising/Production Christine Walker 947 2485
18a Cavendish Crescent North, Nottingham NG7 1BA

THE MAPPERLEY PARK RESIDENTS' ASSOCIATION

Chairman	David Towers	962 1513	
Secretary	Elizabeth Sanders		emsanders2@yahoo.co.uk
Treasurer	Vacant		
Membership	Marcus Wakely	960 9038	
Traffic	David Cummins	969 1106	
Trees	David Podesta	960 3029	
Social Events	Suma Harding		srh@trent.plus.com
Members	Carole Ayre	962 2004	
	Mark Cox	844 9894	mark@dpemberton.com
	Paul Watts	960 9964	
	David Hughes	960 7746	

For Neighbourhood
Watch/Private Rd Laura Archer 960 6986
For Elm Close Peter Henson 960 7561

SOCIAL GROUPS

Mapperley Park Tennis Club, Carisbrooke Drive	969 1278
Membership Secretary Cynthia Lyndo	
Magdala Tennis Club, Magdala Road	966 3047
Club Secretary Jenny Wheelhouse	
The Nottingham Bridge Club, Mansfield Road	960 7992
Mapperley Park Book Club Stasia French	910 7644
(Lively discussions about books of your choice; meets monthly at residents homes)	
Book Club 2 Sheila Reece	962 1320
Meets on 3rd Wednesday of month 1pm to 3pm	

DOCTORS

Dr Andrew Flewitt and Dr Mona Vindla	985 8552
Sherrington Park Medical Practice, 402 Mansfield Road	
Dr Mark Stevens	841 2022
Mapperley Park Medical Centre, 41 Mapperley Road	
Dr D G Black & Partners	985 8822
Sherwood Health Centre, Elmswood Gardens, Sherwood	

DENTISTS

Anil Chand, Mapperley Park Dental Care	962 4607
18 Mapperley Road (NHS & Private)	
Dr Andrew Cluskey & Dr Chris Stead (Private)	960 2717
Tavistock Drive Dental Care, 1 Tavistock Drive	
Brian Snape, Mapperley Dental Care	960 5282
431 Woodborough Road (NHS & Private)	

Dr Mistry, The Grange Dental Centre	962 3432
480A Mansfield Road, Sherwood (bottom of Private Road)	
Mrs A W, Holly Tree House Dental Practice	962 2882
334 Mansfield Road	

CHURCHES

St. Andrews C of E, Chestnut Grove	960 4961 & 912 0098
Main services Sunday at 10.15am and 7pm	

St Augustine's Catholic Church, Woodborough Road	953 9839
Principal Mass times: Vigil Mass Saturday at 6pm	
Sung Mass Sunday at 11am	

St John's C of E, Mansfield Road, Carrington	962 1291
Main service Sunday at 10am	

St Jude's C of E, Woodborough Road	985 6131
Sunday: Traditional service 9.15am	
Contemporary service with children's groups 11am	
Informal service 6.30pm	

Sherwood Methodist Church, Devon Dr/Mansfield Rd	962 2616
Main services Sunday at 10.30am and 6.30pm	

YOUR LOCAL COUNCILLORS

Emma Dewinton (Lab)	960 8198
Michael Edwards	915 5050 or 07876 203352
email michael.edwards@geo2.poptel.org.uk	
Mo Munir	969 3126
Surgery: Outside Co-op, Mansfield Rd. Third Saturday of every month 10.30-11.30am (except August & Bank Holidays).	
Telephone for advice or appointments outside usual surgery times.	

COUNCIL NUMBERS

Anti-social Behaviour	915 1135	City Information	915 5330
Cleansing Services	915 2000	Council Tax	915 4851
Abandoned cars	"	Trees:	
Dumped rubbish	"	Street	915 2264
Street cleansing	"	Protected	915 5414
Dog Warden	915 6223	Education	915 0706
Pest Control	915 6170	Drains	915 6650
Highways & pavements		Library	915 2828
(cracks & potholes)	915 6156	Planning Permission	915 5426
Building Regulations	915 5358	Pollution Control	915 6410
Public Health	915 6798	(smoke emission & noise)	
Social Services	915 5500	Street Lights	915 2211
Trading Standards	950 7910	Drugs	915 1956

If you cannot find the service you require listed above then try the City Council switchboard on 915 5555

POLICE

Station	967 0999
Beat Officer, Mapperley Park, PC Jeanette Stasuiik	07792 437306
Police Community Support Officer	
Prostitution Task Force	967 0555 ext 4249
Paul O'Dwyer and Gary Morphus	

Whilst every reasonable care is taken, neither The Mapperley Park Residents' Association nor its agents can accept any liability for any inaccuracy or any loss or damage arising from any articles, advertisements or other items in this publication. The views expressed in this publication are not necessarily those of the Association.

COFFEE MORNINGS

For Mapperley Park residents and friends

in the Ukrainian Centre Mansfield Road
(opposite the end of Mapperley Hall Drive)

On the 2nd Monday in the month

**EVERYONE WELCOME
WELL ATTENDED**

September 14th

October 12th

November 9th

December 14th

Mapperley Park News

Next publication date 1st March 2010

Articles, photographs, comment, letters are all welcome. Please send before Christmas if possible and by mid January at the latest to any of the editorial team listed above.

Advertising For information contact Christine Walker on 0115 947 2485 or walker.ce@virgin.net.
Copy deadline 30th January.

Sherwood Art Week

Pronounced 'a great success' by public, shopkeepers and artists

**Report and photographs by
Martine Hamilton Knight**

SHERWOOD, known for its permanent art on buildings, such as the murals on the corner of Winchester Street and the old Bus Depot, took the theme to a higher level, and held its first Art Week between 13th-20th June 2009.

The event was hosted by multiple businesses and public buildings throughout the district with a big launch on the 13th, in glorious weather. With over eighty venues participating, there was a terrific variety of art, textiles, glassware and sculptures on show, mostly created by locally based practitioners.

Project managers Sue Staples and Jane Gill put in a huge amount of work and their efforts well and truly paid off - judging by the feedback from local shopkeepers on the following Saturday, absolutely all of them declared the week to be a resounding success and sincerely hope that it will be repeated next year.

I caught up with one of the artists, Jane Goddard who exhibited at The Robin Hood Inn, with her stylish pen and ink drawings of archaeological artefacts. She told me that the 13th was a carnival atmosphere - The Robin Hood had live music and food in the beer garden and people flooded in and out all day long. A comments book was running, and included positive feedbacks such as, "fantastic, I didn't realise Sherwood had such a creative and thriving artistic community" from Jean J, and, "a lot of organising has gone into bringing this together - well done, it shows just how much talent there is in this area", Walter K.

John Hall at JT Beedham butchers had a funky mask of a pig

by James T. Gant in the window and he said that there had been lots of comments about his unique display and that they'd definitely be up for doing it again next year.

Chatting to Lynne Watson at Osbournes Stationers, she was emphatic that the road "felt vibrant - like it did years ago - we need more of this!" and stressed that whilst Nottingham has many wonderful events in the city, we need community activities in the suburbs to help encourage footfall and trade, especially in these recession hit times.

In addition to the artworks, on Saturday 20th, the Sherwood Festival took place in Woodthorpe Park with, amongst others - children's favourites - Johnny and the Raindrops playing on stage, simple rides and attractions, a great 'rope bridge' hosted by the scouts and lots of homemade food, plants, clothes and toys on sale for folk to get involved with. A robust turnout of families from Carrington and Haydn Road schools enjoyed the music and fun. A little later, meandering up and down Mansfield Road, I was caught up in the happy spirit, and stopped several passers by to ask if they agreed with the principle of the Art Week and if they had come especially. Debbie Royle and her children were looking at the painting by Mike Bell in the window of Le Mistral and commented that they thought it a wise move by the organisers, something which Le Mistral staff re-iterated inside. In fact the lady behind the counter said they'd been so rushed off their feet, she had not even had a chance to go and see everything for herself. Now if that's not a measure of the unqualified success for this event - I don't know what is!



Sherwood Festival in Woodthorpe Park



Work by local artists in the window at Choice



Jane Goddard with her drawings on show in the Robin Hood Inn



Rope bridge at Sherwood Festival



Lynne Watson and Lisa Guy outside Osbournes stationers

Hairfree, Carefree

Did you know that depilation is the oldest and most popular cosmetic treatment of all? Women were depilating 5000 years ago and they still are - only using the latest technology and techniques.

Laser hair removal has come a long way since we first experimented with Ruby Lasers in 1994 - and since then we have tried them all, including IPL, and have a museum of hair removal systems to prove it!

In 2009, we have no doubt that the best technology is combined Alexandrite and Nd:YAG laser, delivering high power treatments for light skin types and long-pulse treatments for dark skins.

Trust us - we know what we are doing and will advise you accordingly.



Hairfree, Carefree

Lasers to suit all skin colours

- Permanent hair removal
- Over 150,000 successful treatments
- Nottingham's original laser clinic, established 1993


**mapperley park
clinic**

Care Quality Commission Registered

To be hair free, simply call
The Mapperley Park Clinic on

0800 294 6514

www.mapperleypark.co.uk
395 Mansfield Road Nottingham NG5 2DL

Skin Rejuvenation

There are three steps to better skin: improve surface tone and texture, resolve deeper sun damage and build up deep, dermal collagen.

We have dozens of techniques and treatments to select from and will choose a programme to fit both your needs and your pockets.



From peels and products, injections to laser, we have them all - as well as the experience to use them.

Call us for more information.

Tattoo Take-away

We began using lasers for tattoo removal in 1993 and we have carried out 150,000 successful treatments since then.

Laser tattoo removal is safe, effective and medically proven (unlike other, chemical methods). Tattoo removal works - come and talk to us about it and take advantage of our 7 for 5 package offer. That's nearly a 30% discount.



Before



After

Facial veins and leg veins

From the finest 'spider veins' to the largest varicose veins, we have a solution.

The thing about unwanted veins is that you need a huge range of diagnostic equipment, IPL, lasers, injection and surgical techniques and uniquely for Nottingham we have them all.

Come and see us and find out what we can do to give you back your 'holiday legs'.



Wines for a Christmas Feast



**By David Bennett,
Optometrist
with Brooks
and Wardman
and wine writer**

A regular feature of the summer tasting calendar is the annual Italian wine tasting in London where I set out to find some suitable wines for Christmas.

With thousands of local, indigenous varieties found all over the country, Italian wines can make a delicious change from the rather insipid selections found in most supermarkets. Italy makes both the most wonderfully diverse range of wines and in volume terms has the highest production in Europe. Sciaglin, Cividin and Lacrima Christi de Morra Alba are some of the more obscure grape varieties they make into the most delicious wines. Perhaps the names do not trip quite so easily off the tongue as Chardonnay and Cabernet Sauvignon but I make no apology for recommending only Italian wines this year!

Why not wake up on Christmas morning to a Bellini? Fresh peach juice and Prosecco, the Venetian classic aperitif. Created in 1948 by Giuseppe Cipriani, the Bellini was allegedly inspired by the 15th century Venetian painter Giovanni Bellini and was served first in Harry's Bar just along the waterfront from St Mark's Square. There is a mountain of boring Prosecco out there but the Bisol range is just about as good it gets - barring the superb artisanal producers' bottles that one only finds locally in the region. The bubbles are not made in the same way as Champagne, the second fermentation producing them takes place in a steel tank rather than in the bottle.

Prosecco Bisol Jeio - the entry level Prosecco is a light fruity sparkler with hints of almonds and delicacy, whilst the top version Cartizze is more elegant and more delicate in style and is from, what is alleged to be, Italy's most expensive vineyard. For a fish course try Emilo Bulfon's Cividin. A tiny producer found in Friuli north east of the country, Emilio and his family only produce wines from old varieties of vines. Do check out the gorgeous label; it was designed by Bulfon himself and inspired by a medieval fresco of the Last Supper in the church of Santa Maria dei Battuti in Valeriano. If there was ever a label to grace a bottle, this is it. Cividin is a delight of a wine, quite mineral rich and has the 'cut' to deliver the fruit of the grape quite deliciously. Available from the Bat and Bottle in Oakham (www.batwine.co.uk).

Wines to match a turkey are rich Chardonnays. The winery Planetain Sicily makes a Chardonnay in a Meursault style. Rich fruit with ripe peach,

apricot and a spiciness coming from the longer aging in oak barrels. Typically at its best at six years from vintage, it drinks well from release. Why not try a mountain wine from high up in the Alto Adige? A wine called Manna made by the Frank Hass winery. It's a blend of four grapes, Sauvignon, Traminer, Chardonnay and Riesling and was the star white of the Italian tasting in London for me. If you are a red fan then try Tuscan and central Italian wines which are super with all sorts of food. Great Chianti from small estates and great Brunello di Montalcino are lovely. Italy has had a good run of vintages recently and the 04, 05, 06 vintages are the ones to look for. Don't skimp here though as you need to go to £10-£15 for a reliable version. Try the Wine Society's own label Chianti or the fabulous Supertuscan Tignanello for real complexity. Another great Italian red is Valpolicella. Marks and Spencer have a very

good value Ripasso version of this where the wine is given an extra richness by passing it over the skins of previously dried grapes. This gives the wine an extra 'oomph'.

Finally to the pudding. If you are after a Christmas pudding match then a Recioto do Valpolicella, a fortified Valpolicella on steroids, may go nicely. If you are not having traditional pudding I do urge you to find some wine from the Zibibbio variety. Ben Rye is the label name of this wine from the Donnafugata winery. It tastes like an apricot coulis tickled with tangerine. Absolutely delicious.

So after dinner it must be Amarone. A big alcohol wine that needs some time to sip, cogitate and put the world to rights in front of the log fire now raring in the grate. Try Allegrini's Righetti's version to be sure of the quality. Above all, don't overdo it but have some safe, pleasurable drinking.

My Favourite Recipe



**Michael Johal
of MJ News**

LOCAL newsagents Michael and Hayley Johal believe in giving a top quality and loyal service to their community. They get up each day at about 4am to open their shop, M.J. News and Dolls Houses, for 5am. And several nights a week they are open until 7.30pm! They have run their newsagents and dolls' house furniture business on Mansfield Road in Carrington for the past nine years. Michael's original plan was to open up solely as a dolls' house shop. But the previous newsagent business had been there for 40 years and he realised it would leave a big gap in the community if it did not continue.



Outside the Johal's shop in Carrington

He told us, "We feel we are a real part of our local community, which is important to us. We have got involved with local issues, such as the 'Save the Post Office' campaign".

Michael and his wife Hayley, who deliver to 180 homes every day, say they plan to run the business for as long as it is needed.

Pork & Vegetable Stir Fry

Healthy! Low fat!

2 tbsp light soy sauce
2 tbsp dry sherry
2 garlic cloves crushed
1 piece fresh root ginger, peeled & grated
1 tsp cornflour
1lb pork tenderloin cut into thin slices
1 tbsp groundnut oil
1 large carrot cut into matchsticks
8oz broccoli cut into small florets
8 spring onions shredded
5oz bean sprouts
Salt & ground black pepper
Rice to serve

METHOD

Put 1 tbsp soy sauce, 1 tbsp sherry, the garlic, ginger & cornflour into a large bowl. Mix well. Add the pork and stir thoroughly. Put to one side to marinate for 15 minutes.

Heat a wok or large non stick frying pan until very hot. Add the groundnut oil. Stir-fry the pork slices in 2 batches, cooking each batch for 2-3 minutes until the meat is browned. Set aside & keep warm. Reheat the pan, add the carrot & broccoli and stir fry for 5 minutes. Add remaining sherry and soy sauce also 4

tbsp cold water and bring just to the boil. Return the pork to the pan and stir fry for 2-3 minutes until hot. Add spring onions & bean sprouts and cook for a further minute. Season with salt & pepper and serve with rice. ENJOY!



ALEXANDRA PARK
Shrewsbury House
5 bed Victorian detached with
substantial gardens
£650,000



MAPPERLEY PARK
Carisbrooke Drive
5 bed period detached with
landscaped gardens
£525,000



MAPPERLEY PARK
Cyprus Road
4 bed detached with stunning
bathroom, garage and gardens
£340,000



MAPPERLEY PARK
Shirley Road
5 bed Victorian semi-detached
with generous gardens
£325,000



MAPPERLEY PARK
Lucknow Avenue
5 bedroom Edwardian semi,
gardens and off road parking
£280,000



ALEXANDRA PARK
Denmark Grove
3/4 bed Victorian semi-detached
with garage & workshop
£250,000



MAPPERLEY PARK
Vicame Court
3 bed stylish duplex garden
apartment with private parking
£250,000



MAPPERLEY PARK
Ebers Grove
4 bed Edwardian terraced with
landscaped courtyard garden
£225,000



MAPPERLEY PARK
Cyprus Road
2 bed top floor apartment,
master en suite
£205,000



MAPPERLEY PARK
Richmond Court
2 bedroom 1st floor apartment,
stunning entrance hall
£200,000



MAPPERLEY PARK
Vicame Court
2 bed top floor apartment with
en-suite, balcony and garage
£130,000



MAPPERLEY PARK
Merrivale Court
2 bed top floor apartment with
garage & communal garden
£120,000



MAPPERLEY PARK
Lucknow Drive
Luxury detached house, high
specification throughout
£1,350,000



MAPPERLEY PARK
Richmond Drive
5 bed period detached with
substantial south facing garden
£550,000

More than a just beautiful place to live

During 2009 and in particular over the summer months we have seen a return of buyers with a positive, yet discerning attitude and have experienced with realistic pricing an increased level of sales agreed. Mapperley Park continues to be an aspirational and sought after location.

We are still the agent of choice with more properties available and more sales agreed than any other agent

To discuss the sale of your property or to find your perfect new home please call me



Steve Parker
Mobile: 07917 460027
Direct dial: 0115 9415931
Email: steve@fhpliving.co.uk



MAPPERLEY PARK
Mapperley Hall Drive
6 bedroom semi - detached
house
£545,000



MAPPERLEY PARK
Magdala Road
6/7 bedroom detached house,
gardens & gated parking
£475,000



MAPPERLEY PARK
Woodland Drive
4 Bedroom detached house, 2
garages & gardens
£450,000



MAPPERLEY PARK
Carisbrooke Drive
4 bedroom detached house,
gardens and carport
£425,000



MAPPERLEY PARK
Arlington Drive
4 bedroom detached house with
garage and gardens
£425,000



MAPPERLEY PARK
Lucknow Drive
4 bed detached completely
refurbished with garage
£395,000



MAPPERLEY PARK
Chestnut Grove
3 bed contemporary refurbished
coach house with 3 en-suites
£385,000



MAPPERLEY PARK
Tavistock Drive
5 bed Victorian semi-detached
with many period features
£350,000



MAPPERLEY PARK
Zulla Road
5 bedroom detached house, 2
receptions and garage
£350,000



MAPPERLEY PARK
Grosvenor Avenue
4 bedroom semi detached house
with driveway and garden
£320,000



MAPPERLEY PARK
Lucknow Avenue
5 bed Edwardian semi-detached
refurbished throughout
£320,000



MAPPERLEY PARK
Lucknow Avenue
4 bedroom semi detached house
with driveway and gardens
£300,000



MAPPERLEY PARK
Ebers Road
4 bed deceptively spacious
Victorian detached with parking
£295,000



MAPPERLEY PARK
Berkeley Avenue
4 bedroom detached house,
garage and gardens
£250,000



MAPPERLEY PARK
Redcliffe Road
2 bedroom garden apartment,
private terrace
£230,000



MAPPERLEY PARK
Cyprus Road
2 bed ground floor apartment
with private garden and garage
£220,000



MAPPERLEY PARK
Ebers Grove
3 bedroom terraced house, rear
courtyard garden
£215,000



MAPPERLEY PARK
Cyprus Road
2 bedroom apartment with
garden & driveway
£210,000



MAPPERLEY PARK
Lucknow Road
2 bedroom top floor apartment,
2 parking spaces
£180,000



MAPPERLEY ROAD
Ellis House
2 bedroom penthouse apartment
with balconies & parking space
£175,000



MAPPERLEY PARK
Park Mews
3 bedroom mews house, garage
& courtyard garden
£167,000



MAPPERLEY PARK
Lucknow Road
2 bedroom ground floor
apartment with parking space
£155,000



MAPPERLEY PARK
Havelock House
3 bed top floor apartment with
far reaching views
£140,000



MAPPERLEY PARK
Mapperley Road
2 bed apartment completely
refurbished with parking
£120,000

Poignant return to Normandy beaches

Sue Ashan

I have been asked to write about my visit to Normandy, for the 65th anniversary D-Day commemorations.

I was told to expect it to be an emotional trip but never could I begin to imagine just how much so it would prove to be, when my father suddenly and unexpectedly died during our trip.

My father, Harold Dudman, had been involved in the Normandy invasions, landing at Sword beach in June 1944, as part of the R.E.M.E 11th / 29th Armoured Division. He was really excited at the prospect of returning for the commemorative events.

We arranged an organised tour with Poppy Travel, part of the Royal British Legion. My mother, Lesley, came too and I also invited my friend, Pauline

Hart-Chaplin, and her father, Harry Hart, to join us. Although Harry had not fought in Normandy, his younger brother, Bill Hart, had been killed there, so it was a chance for Harry to go and visit his grave.

There was a wonderful atmosphere on our bus with an interesting mix of people. We had a number of old soldiers and members of their families, others taking the trip because of their interest in the history of D-Day, some serving soldiers and members of the British Legion.

I was amazed at the reaction all the veterans got from the local people of Normandy. Even the young people have been brought up to appreciate what these men did for them. They wanted to shake their hands and thank them. Some people on the pavements would even salute as we drove by in our bus.

Friday June 5th was a wonderful day, warm and sunny. It turned out to be my dad's last day but I know he could not have wished for better. Our first stop was at Ranville War Cemetery. We watched a re-enactment of the parachute drop which began the Normandy invasion, followed by a service of remembrance complete with marching bands.

From there we moved on to Pegasus Bridge where there was a real carnival atmosphere. We sat and had lunch at the Café Gondrée, which was the first building in France to be liberated. My dad was wearing his old regimental tie and was thrilled when some serving soldiers from his regiment recognised his tie, came over, shook his hand and chatted with him.

Our next stop was totally unscheduled, yet turned out to be the most poignant moment of our trip. Totally unplanned, we ended up visiting part of Sword Beach. My dad had twice before visited Normandy but had never recognised any parts of the beach that he had seen, yet when we reached this particular stretch, he instantly knew it to be the exact point at which he had landed in 1944. He could recall so much from that day and told us lots of things about it which I had never heard before. It obviously meant a



Sue Ashan and her father

great deal to him to have seen it again. He told Pauline later that day that he had waited 65 years to see it. I'm so glad he did.

Following dinner that evening came a surprise announcement from our tour guide - we were all invited to have lunch with Prince Charles and Gordon Brown the next day after we had attended the service at Bayeux Cathedral. Everyone was very excited at this.

My dad decided he would have a shave that night so that he could be ready for the early start for the big events the next day. He went up to his room and I took him and my mum a cup of tea to have before they went to bed. They went to sleep but sadly my dad did not wake up again, having passed away at 3am on Saturday June 6th - D-Day.

We had been due, later on that day, to attend a ceremony at Arromanches where D-Day veterans were to be presented with a badge as a gift from the people of Normandy. Several people suggested that we ought to still attend this in order to accept my dad's badge on his



Outside the Café Gondrée

behalf. They thought we might regret it later if we did not go and so we decided to try to get there.

We were so lucky to have met a wonderful lady called Anita Cosseron. She was actually the local funeral director who was taking care of my dad, but she did so much for my mum and I for which we are forever in her debt.

Security was high, since many dignitaries were attending, so getting to Arromanches was not going to be easy. Anita obtained a pass, from the chief of police, which allowed us to pass through every road block between Caen and Arromanches. She drove us, in her own car, twenty miles or more, stopping and talking to the police at each road block and making them let us through. She took us right to the square in Arromanches where the ceremony was taking place. I was totally overwhelmed at her kindness. She did not need to do that for us. When I said as much to her, her reply was "He helped us. I want to help him". She truly felt she was repaying a debt.

With the heightened security, the police would not allow Anita to park her car and so she was forced to drop us off and leave. This left us, again, at the mercy of my limited French, and so we needed help to get in to the area where the presentations were taking place.

I noticed a group, speaking English, who I mistook for officials as they were wearing name badges. I explained what had happened and asked if they could help. One of the men took mum and I, talked to the police on the gate, and got us entry to the restricted area. He took us right up to the Mayor of Arromanches who then presented my dad's badge to my mum.

I did not get this kind man's name. All I remember is that he lives in Keyworth in Nottingham and that he was not an official at all - he was on a trip like us! I would love to have the chance to thank him for his help and am currently trying to track him down.

We watched the remainder of the ceremonies, in the pouring rain, before meeting up with our tour group and returning on the bus to our hotel. Everyone was so kind but we realised it would be quite impossible for us to remain with the tour for another two days. That evening we made arrangements to return home the following day.

Mum and I returned to England, leaving my dad safe in the care of Anita. He was eventually brought home six days later and his funeral took place, in London, on June 26th.

Although it was a terrible time for mum and me, we have no regrets at having made the trip. In many respects it seems that destiny played its part, and that things were actually meant to happen this way.

Of course, we are missing him dreadfully, but we shall always have such great memories of how happy he was on that last day and how thrilled he was to, at last, be able to find 'his beach'.

We take enormous comfort from that.



Nottingham Girls' High School

Independently educating girls from 4 - 18



OPEN EVENTS

Sixth Form Information Evening

Tuesday 29 September 2009
7.15pm - 9.00pm

Junior, Senior and Sixth Form Open Morning

Saturday 10 October 2009
9.30am - 12.30pm

Junior School 'Come and See us at Work Day'

Tuesday 19 January 2010
9.30am - 11.00am and 2.00pm - 3.15pm

SEPTEMBER 2010 ADMISSIONS

For further details, or to arrange a visit, please telephone our Admissions Office on 0115 941 7663.

Nottingham Girls' High School
9 Arboretum Street, Nottingham NG1 4JB Tel: 0115 941 7663
admissions@not.gdst.net www.gdst.net/nottinghamgirlshigh

Nottingham Contemporary to open with major David Hockney exhibition

AN exhibition of over 60 works by David Hockney from national and international collections will open Nottingham Contemporary in November.

This new building on Weekday Cross will be one of the most important spaces for art and culture anywhere in Britain. The public opening is on 14 November 2009.

The exhibition will look at Hockney's work 1960-1968, his early years in London and Los Angeles.

The exhibition will occupy two of Nottingham Contemporary's four galleries, a huge combined space of 750 square metres, lit by 133 skylights.

The exhibition is curated by Nottingham Contemporary Director, Alex Farquharson who is known for his adventurous and popular approach.

Also on show for the opening will be recent work by Frances Stark, one of the most fascinating artists to have emerged from Los Angeles's vibrant art scene in the past 15 years.

Nottingham Contemporary's building which cost £19.4 million was funded by the National Lottery through the Arts Council, Nottingham City Council, East Midlands Development Agency the European Union and European Regional Development Fund.

Are you looking for childcare?

We provide professional families with childcare solutions throughout the East Midlands. We specialise in supplying Nannies and Au Pairs, mother's helps and babysitters for full and part time, holidays, temporary and emergency cover. We offer a friendly service with **FREE REGISTRATION**. We also run Event Nannies.

For more information or to register call **01509 670758**
or visit www.firstchoicenanny.co.uk
First Choice Nanny Agency Ltd



GREENHOLME SCHOOL
392 Derby Road
Nottingham NG7 2DX

- HIGH ACADEMIC STANDARDS ■ OUTSTANDING EXAM RESULTS
- SMALL CLASSES & SPECIALIST TEACHING
- MUSIC LESSONS ■ EXCELLENT ON-SITE SPORTS FACILITIES
- BEFORE & AFTER SCHOOL CARE



Specialist Provision for Dyslexia & Individual Needs

INDEPENDENT CO-EDUCATIONAL DAY SCHOOL
NURSERY, RECEPTION AND PREPARATORY 3-11+

Prospectus available from the School Secretary



Tel: (0115) 978 7329 ■ Fax: (0115) 978 1160
enquiries@greenholmeschool.co.uk ■ www.greenholmeschool.co.uk

Hollygirt
SCHOOL

Independent day
school for girls
aged 3-16



Open Day

Tuesday 6th Oct 2009 11am and 2pm

Senior Entrance Assessment

Wednesday 25th November 2009

call us on 0115 958 0596 or
email info@hollygirt.co.uk
Elm Avenue, Nottingham NG3 4GF
www.hollygirt.co.uk

A date for your diary

TABLETOP SALE AT ST JUDES

The next Sale takes place on
20th March 2010, 2pm - 4pm.

Fee £3 with own table, £5 with hired table.

Contact Mrs Joan Hould at beginning of March to book on 0115 960 7729. Organised by Boy's Brigade

Mapperley Park Residents' Association

Final report from retiring Chairman

Carole Ayre



I AM signing off today from my role as Chairman of the Residents' Association. In fact, I formally did that at the last Committee meeting in May. One reason for my resignation was the fact that my photograph is now

so out of date that I cannot continue the fraud any longer. The other was that having been Chairman for five years I thought it was time to pass the mantle on and by the unanimous decision of the Committee it passes to David Towers. David is a very long standing member of the Committee and resident

of Mapperley Park, so we shall certainly be in safe, and very well qualified, hands.

The impact of the economic downturn meant that at the AGM in April there were no significant planning issues to report since there has been relatively little development activity in the Park over the last few months. There was no news regarding the former children's home on Woodborough Road, the Council having received no offers by the time of our meeting.

We did hear about some problems affecting local areas, in particular problems with an empty property, if you are affected, contact PC Jeanette Stasiuk (see contacts list on page 2) or the Council's empty homes officer, Andrew Vickers on 0115 9156128.

Beki Anderson, who is leading the post office campaign, gave a full report on how we had come to lose our post office and what she and her group were doing to try and bring one back to the area, Sherwood being too distant for many and certainly unsuitable for the disabled.

Beki and her supporters have tried so hard and with great commitment. They deserve a mention in despatches and the Committee has made another small donation towards their expenses. Let's hope they have some success.

Inspector Rob Wilson told the AGM that our crime figures are down again this year, a

reduction in reported crimes of 9.6%, with house burglaries down by 16%. Your local beat officer, PC Stasiuk, enthusiastic as ever in her efforts to beat crime, handed out personal alarms, portable window alarms, and 'Smartwater'.

The Smartwater initiative has proved very successful, in large part, it is thought, due to the deterrent effect of the widespread advertising campaign. Have you seen the adverts on the back of buses? You mark your valuables using a personalised invisible ink from a pen which is registered with the police. The police carry with them a detection device which sounds whenever it is in the vicinity of marked goods and it can actually detect your unique registration number. Amazing.

If you want one of the pens or alarms contact Jeanette. You'll notice her mobile telephone number is given on the contacts page - use it if you need immediate help or want to report any suspicious activity. The idea behind issuing the number to you is that you can speak to her whilst she is out and about and she encourages us to use it.

Well, it has been a great pleasure. Thank Committee for helping me so much over the last five years, and to the newsletter team. Now, it's over to you David.

New Chairman's Letter to Residents

David Towers

I WAS elected Chairman of the Association in May, following the retirement of Carole Ayre. Firstly, I should like to thank Carole for her contribution to the Association during her 5 years as Chairman. It involved a lot of work, some difficult problems and actions to be taken. It was an enormous task to fit within her busy life as a partner in a firm of solicitors. So, we must all be grateful for what she has done as the Association's Chairman.

I have been the Treasurer for 11 years, so I have a good understanding of the role of the Residents' Association. I am not planning any significant changes to its work, but I will encourage the Association to develop to meet the various challenges we will experience in the future. Any changes will be through suggestions and discussion with the Committee.

I see this Newsletter as an important contribution of the Association to residents.

It has a high profile within the area, and I would like it to figure more highly in committee meetings and at the AGM.

Planning is an important and controversial subject in Mapperley Park. With the current depressed property market, there are few planning applications.

Nevertheless, the Planning sub-committee will monitor developments. As the property market revives, this will become an even more important area for residents and for the committee to consider. Our actions will not be limited to these two areas, but I do see them as important at the present time.

At the AGM in April, members were asked about a proposed increase in the subscription to £5 a year. This gained a very positive approval. Our total income in 2008 was almost £900, but our expenditure is slightly greater than this, resulting in a deficit. To allow funding of new developments, we need to increase our income, hence the proposed increase. There is a subscription form on the back page of this Newsletter. If you have not yet paid this years



subscription, please complete the form and send it to me. It helps you and us if you pay by standing order, so please consider this.

As I am now Chairman, we need a new Treasurer. If you are interested in becoming Treasurer, please contact me so we can meet and talk about the job. It's more book-keeping than accounting. It

involves dealing with about 300 subscriptions by bankers order, cheque or cash, recording them and banking the cash and cheques. Members details are sent to Marcus Wakeley, our Membership Secretary. There are only a few cheques to pay out. If you don't feel confident about preparing the annual accounts, I can help.

Some people might describe me as a committee man, as I have been on a variety of committees in the past 40+ years (mainly charities, clubs and voluntary organisations). Although I may be a committee man, I am a member of the Association's committee to get things done and to help you, residents of Mapperley Park.

Mapperley Park Gardening Group

The latest news

by Lorna Weir

THE gardening group has had a good year so far with a number of very interesting talks and visits. January was enlivened by an intriguing talk by Professor Kevin Pyke on 'How Plants Grow' which was packed with fascinating botanical information. We have visited three lovely gardens in Halam, Caunton and Burton Joyce and have been made very welcome by the owners.

Our coach trip to Renishaw Hall and Fanshawe Gate Garden was on a beautiful sunny day and the guided tour of Renishaw's garden by David, the head gardener was excellent. It was full of the history of the Sitwell family and the garden and he told us some very amusing anecdotes. This was followed by a delicious lunch and then on to the hidden delights of Fanshawe Gate where we were made welcome by Mrs Ramsden and allowed to wander in her two beautiful old houses as well as admiring the perfect garden. Walking back to the bus on a warm day up a steep hill tested the fitness of some members, including me!



Visit to Burton Joyce

The highlight of our year was when we went to Highgrove, Prince Charles' garden in June. After being on the waiting list for two and a half years this was a very special day out and Sheila has written a separate article about it.

During the rest of the year we will be visiting the Eglantine Vineyard and the Meynall Langley Trials garden to see 74 varieties of fruit trees, holding a plant swap and making Christmas wreaths and decorations in December.



Visit to Caunton

We now have over 70 members and if you aren't a member do come and join us. Our skills range from armchair gardeners to real experts so don't be put off. Our main aim is to enjoy gardens and plants and have some fun and get to know our neighbours.

Please contact me on 0115 9603897 or at lornaweir2002@yahoo.co.uk



Mapperley Hall gardens - a constant delight

Eric Roebuck

I WAS interested to read, in the March edition of the Mapperley Park News, the piece by Nigel Hughes on his part in the restoration of the Mapperley Hall gardens. My introduction to Mapperley Hall and its gardens was in 2001 when we saw, in a publication called *Distinctive Homes Today*, that an apartment in the Hall was available. As we were thinking of downsizing, we came to look. Being gardens lovers we were delighted with what we saw, even though it was December when no garden is at its best.

At the time of our visit, there was a figure we took to be the gardener, digging away in a border at the bottom of the garden. Since we moved into our apartment this is a sight to which we have become accustomed, pretty well on a daily basis. We were, however, entirely wrong in our assumption that the figure was the gardener. It was in fact the Chairman of

our Management Committee, our neighbour in the Hall, Malcolm Reece.

It has been Malcolm, no doubt influenced to some extent by his wife Sheila (both members of the Mapperley Park Gardening Club) who has undertaken much of the hard work involved in the development of the gardens. Not only has he undertaken a lion's share of the actual digging and planting, but, even more importantly, the design of the gardens which are now an absolute delight. It must have taken a great deal of foresight to envisage the end result in 1995 when he was confronted by building residues from the development of the Mapperley Hall Gardens dwellings and the internal changes in the Hall itself. Mounds of rubbish and old stock had to be removed and replaced with attractive planting and architectural features within an altered layout.

Well worth the two and a half year wait

The Gardening Group visit to Highgrove House gardens in June

Sheila Reece

The journey was excellent and we arrived with time to spare. Being early for your Highgrove slot entails driving up and down the narrow road outside, easy enough in a car, very different when a large coach has to be reversed into a farm gate to turn it round. Our driver was perfect!

Once inside we were efficiently processed (passports to visit a garden?) and handed over to a very knowledgeable and enthusiastic guide who had lived in the area all her life.

Highgrove is a fine Georgian house, with a small formal garden surrounded by an eclectic collection of highly personal areas reflecting the Prince's interests and enthusiasms. It is less about expressing its owner's views on life. Charles has also used the garden to find somewhere fitting to put many gifts which he has accumulated over the years.

The parts I enjoyed most were the huge wild flower meadows, though I suspect Ms Rothschild, who had advised Charles on how to establish a wild flower meadow, would have been surprised by the addition of tulips to brighten up the meadow in late spring!

I thought the Sundial Garden, adjacent to the house worked well. Here the deep purple, red and white flowers are framed in low clipped box hedging. It sets off the elegant house perfectly and is very satisfying.

Mapperley Hall gardens continued

We have been lucky with the gardeners employed to help Malcolm. There was Nigel who was also a keen D.I.Y. exponent. He enjoyed nothing more than being asked to build steps, mend a fence or lay concrete paving.

Now we have two delightful ladies. Angela is a trained gardener, a true plantswoman who can advise on mineral deficiencies as well as knowing which plants are likely to survive and where. Penny, the daughter of enthusiastic gardeners, has gardening in her blood. She has wide experience of local conditions and has gardened in the area from childhood.

Our gardens have certainly never ever looked better than they do this year. For residents they are a constant delight, a pleasure which we love to share on appropriate occasions. We are immensely grateful to all who have contributed to their development.



The Carpet garden at the Chelsea Flower show which was recreated at Highgrove

Finally it was interesting to see the Carpet Garden, where Charles had converted the design of a Turkish style carpet into a garden for the Chelsea Flower show. The garden is framed by old brick walls and uses roses and orange blossom to create an exotic and opulent picture. It won a Silver Medal at the show.

Other parts of this very large garden, such as the Terrace, Azalea Walk, Woodland Garden and Cottage Garden have their moment at different times of the year and will please many gardeners, but perhaps not all.

After a very civilised tea and cake we left,

but we had spent so long at Highgrove that we could only fit in a brief visit to Tetbury on our way home. Tetbury is a small old fashioned market town with an interesting history, however my brain and legs were in meltdown so I decided to opt for a sit down and a delicious ice cream.

We arrived home in good time and with lots to think about. The whole trip was one of the Gardening Group's best and when you recall the high quality of other visits that is high praise indeed.

Help to organise 2010 Garden Trail

Many of the team which ran the very successful Garden Trail last year will not be available to help with the next trail in 2010 and this means that several new helpers are needed to organise the event. Apart from arranging the opening of the gardens, there is publicity - printing and distributing leaflets and posters, informing local press, producing a programme, organising and

serving refreshments, collecting money on the day and sorting out traffic etc. etc.

If you are interested in helping with this event which raises a good deal of money for local charities please contact Malcolm Bescoby on 0115 960 8502 or email malcolm.bescoby@mypostoffice.co.uk

Your favourite tree ...

Mapperley Park News is investigating the trees in Mapperley Park and the editors would be interested to know if any readers have a favourite tree. It could be a street tree or one in a private garden so long as it can be seen from the street.

The more answers the better so please spare the time to send an email or note telling us the species of your favourite and its exact location - even a photograph if possible. The resulting

article will appear in the next newsletter in March. Email mapperleypark@trent.plus.com or post to Trees, 31 Lucknow Drive, Nottingham NG3 5EU

and least favourite

There are so many trees, and bushes, overhanging our pavements. If you have problems walking around please report this to the city council. Ideally branches should be cut high enough for a pedestrian holding an umbrella to pass under easily.

Open mornings at city centre cultural club

IN the 19th century Mechanics Institutes were opened in many cities and became meeting places and centres of social activity. The Nottingham Mechanics was established in 1837 in Trinity Square.

In 2003 the centre moved to new purpose built premises in North Sherwood Street with all the advantages of new technology to cater for the many different needs of its members.

Library and restaurant

The Mechanics has a well stocked library, a restaurant and bar, and a suite of rooms used by members and outside groups. They have a huge programme of activities including classical music and opera clubs, bridge, chess and whist, a horticulture section, literary lectures, dances, theatre visits, day trips and overseas holidays.

There are also lounges where members can relax and read the newspapers.

Open mornings

For information and membership details, please ring Mr Robert Cockayne 0115 9417353. Non members can visit the Mechanics, have coffee and look round on the first Saturday of each month from 11am.



Ballet company finds new home

NOTTINGHAM'S New English Contemporary Ballet company has moved to a new home in the city. Thanks to significant support from Nottingham City Council they have been able to relocate to the former Douglas Primary School on Seely Road in Radford.

The move will mean a major improvement in facilities for NECB's professional and junior dance companies; as well as for students on their vocational training courses. The company is also developing young dancers from Mapperley Park on its Associates programme.

The new facilities include several dance studios, lecture rooms, a cafe lounge and technical workshops.

Artistic Director Niall McMahon says "This looks to be a perfect home for NECB. It will help us achieve our ambition of putting Nottingham on the national and international stage as far as dance is concerned. While our core training programmes have been about contemporary ballet, jazz and musical theatre, we also want to offer classes and community programmes to people who are passionate about all forms of dance from Salsa to hip hop."

NECB is supported by choreographer and Strictly Come Dancing star Craig Revel Horwood who is about to choreograph a ballet for the professional company's 2010 national tour.
www.newenglishcontemporaryballet.co.uk

Spanish in Carrington

Small groups, well qualified and experienced teacher, central location

Three levels, both daytime & evening sessions

New courses starting September 22nd 2009

For further details
telephone Sue on 0115 9604323
email: susan@englishgreen.co.uk

Broadway Bites

NOTTINGHAM'S independent Broadway Cinema is currently offering a special deal in a combined ticket for a meal in the cafe bar and a film.

Called 'Broadway Bites' tickets are available for only £11.95 (or £9.95 for members and concessions).

Apart from screening the best new films, Broadway includes



Broadway Cinema entrance in Broad Street

TO ADVERTISE in Mapperley Park News

The next issue comes out on 1st March 2010. The deadline for advertising is 28th January. Contact Christine Walker on 0115 947 2485 or walker.ce@virgin.net for full details.

Every household and business within Mapperley Park receives this

TO CONTRIBUTE to Mapperley Park News

The editors (listed on p.2) are very happy to receive articles, letters or photographs from residents. For 1st March edition please send by 1st January or, if possible, before Christmas.

independent and World titles and classics in its programmes.

Please note that Broadway Bites cannot be booked in advance but should be purchased from the box office at least an hour before the start of the film you wish to see.

Quality British furniture at its very best...

Parker+Farr



HOPEWELLS

The furnishers since 1885

Monday to Saturday 9:00 to 5:30 Sunday 10:00 to 4:00pm

FREE CUSTOMER PARKING

151 Huntingdon Street, Nottingham. Telephone (0115) 953 6000

www.hopewells.co.uk

Hopewells offer excellent value; we guarantee to match any genuine quotation within 7 days of purchase or give a full refund.

What's on

September to December 2009

NOTTINGHAM PLAYHOUSE

Box Office 0115 941 9419 www.nottinghamplayhouse.co.uk

Fri 4 - Sat 26 September
BLITHE SPIRIT by Noel Coward

Sun 27 September at 7.30pm
MARCUS BRIGSTOCKE

Wed 30 September at 8pm
JULIAN CLARY, LORD OF THE MINCE

Tues 6 & Wed 7 October, 7.30pm
BOUNCE, INSANE IN THE BRAIN
A street dance version of One Flew Over the Cuckoos Nest

Sat 10 October at 8pm
GRUMPY OLD WOMEN LIVE 2

Thurs 15 - Sat 24 October
OUR MAN IN HAVANA by Graham Greene

Sun 25 October at 7.30pm
ALISTAIR MCGOWAN

Wed 28 October at 8pm
TIM MINCHIN - Ready for This

Fri 30 and Sat 31 October at 8pm
SIMON AMSTELL - Do Nothing

Wed 4 - Sat 21 November
THE CAUCASIAN CHALK CIRCLE by Bertolt Brecht

Monday 16 November at 8pm
DANIEL KITSON - WE ARE GATHERED HERE

Fri 27 November 2009 - Sat 23 January 2010
BEAUTY AND THE BEAST

THEATRE ROYAL

Box Office 0115 989 5555 Website and online booking
www.royalcentre-nottingham.co.uk

THE GRASS IS GREENER
Mon 7 - Sat 12 September

ANNIE
Mon 14 - Sat 19 September

HORRIBLE HISTORIES
Tues 22 - Sat 26 September

RAMBERT DANCE COMPANY
Thurs 1 - Sat 3 October
Britain's premiere dance company

DREAMBOATS AND PETTICOATS
Mon 5 - Sat 10 October

KES
Tues 13 - Sat 17 October

FASCINATING AIDA
Tues 29 September

PEPPA PIG
Wed 21 - Sun 25 October

DIAL M FOR MURDER
Tues 20 - Sat 24 October

NEVER FORGET
Tues 27 - Sat 31 October

OPERA NORTH
Tues 3 - Sat 7 November
Massenet, Mozart and Janacek

Nottingham Operatic Society
COPACABANA
Tues 10 - Sat 14 November

Northern Ballet Theatre's **CHRISTMAS CAROL** Tues 17 - Sat 21 November

Spike Milligan's **ADOLF HITLER - MY PART IN HIS DOWNFALL**
Mon 23 - Sat 28 November

JACK AND THE BEANSTALK
Sat 5 December - Sun 17 January

TRENT FM ARENA

Box Office 0115 853 3000 Ticket Hotline 0844 124624
www.nottingham-arena.com

2nd September
GMB Paners vs Sheffield Steelers

25-27 September
Michael McIntyre

30 September
Cliff Richard and the Shadows

23rd-24 October
Eddie Izzard Stripped

3rd November
Pink

8 November
WWE Smackdown

11-15 November
Disney on Ice, Princess Wishes

18 November
Kasabian

20 November
Beyonce

1st December
James Morrison

4 December
Queen

10 December
Lily Allen

12 December
Abba the Show

15 December
Russell Howard

16 December
UB40

20 December
Status Quo

LACEMARKET THEATRE

www.lacemarkettheatre.co.uk

Sept 16-19 **LIFE x 3**
by Yasmina Resa

Oct 5-10 **ABIGAIL'S PARTY**
by Mike Leigh

Oct 21-24 **KINDERTRANSPORT**
by Diane Samuels

Nov 9-14 **FESTEN**
by David Eldridge

Dec 7-12 **LITTLE RED RIDING HOOD**
by Wakefield/Edgar

ROYAL CONCERT HALL

Box Office: 0115 989 5555 Website and online booking
www.royalcentre-nottingham.co.uk

LORD OF THE DANCE
Tues 3 - Sun 8 November
The Irish dance spectacular

BLUES BROTHERS XMAS PARTY
Thurs 10 - Sat 12 December
Journey through rhythm and blues

CLASSICAL & WORLD MUSIC
Voices of Hope Charity Concert (26 Sept)
Halle (1 Oct)

Remembering Nusrat (3 Oct)

St Petersburg Symphony Orchestra (14 Oct)

BBC Radio 3 Discovering Music Concert (28 Oct)

Ladysmith Black Mambazo (31 Oct)

Bryn Terfel (12 Nov)

Halle (13 Nov)

Four Seasons By Candlelight (18 Nov)

The RAF in Concert (19 Nov)

Sinfonia Viva (24 Nov)

John Williams and John Etheridge (26 Nov)

Nottingham Harmonic Society perform Messiah (5 Dec)

Grimethorpe Colliery Band (13 Dec)
Nottinghamshire Children's and Young People's Services Christmas Concert (15 Dec)

Royal Liverpool Philharmonic Orchestra & Liverpool Welsh Choral (16 Dec)

Family Carol Concerts (19 & 23 Dec)

Cantamus Choir (22 Dec)

Sinfonia Viva New Year's Eve Gala (31 Dec)

POP AND ROCK

The Drifters (7 Oct)

Paul Potts (9 Oct)

Joan Baez (15 Oct)

The Proclaimers (16 Oct)

Alesha Dixon (20 Oct)

Orquesta Buena Vista Social Club (21 Oct)
Jimmy Webb and The Webb Brothers (11 Nov)

Jools Holland (14 Nov)

Mot'head (16 Nov)

Joe Bonamassa (30 Nov)

Alice Cooper (4 Dec)

COMEDY

I'm Sorry I Haven't a Clue (23 Sept)

The Best of British Variety with Cannon & Ball, Tom O'Connor, Faith Brown, Bucks Fizz (24 Sept)

Rob Brydon (2 Oct)

Bashment Granny 2 (4 Oct)

Jimmy Carr (20 Nov & 1 Dec)

Common-Law! featuring Oliver Samuels (6 Dec)

Ken Dodd Christmas Happiness Show (30 Dec)

FAMILIES

Beanbag Proms (12 Sept & 19 Dec)

The Chuckle Brothers (27 Nov)

Mediums, Psychics and Magic, Lisa Williams (8 Sept)

AND MUCH MORE INCLUDING

We'll Meet Again (4 Sept)

80s Mania (10 Oct)

Vampire's Rock featuring Toyah Willcox (29 Oct)

Sing-a-long-a ABBA (30 Oct)

Diwali (21 Nov)

EMESP Prestige Science Lecture (25 Nov)

Sing Live (29 Nov)

The Bootleg Beatles (14 Dec)

Best of the West End (17 Dec)

Glenn Miller Orchestra (20 Dec)

That'll Be The Day (27 Dec)

Abba Mania (29 Dec)

Glastonbury 2009

By Daniel Harding

HIDDEN away in my baby book are my firsts: words, gurgles, trips to the park, seaside holidays, baths, dry nights et cetera, et cetera. Interesting details they might be, but they don't offer much in the way of personality. The predictions page is more intriguing, despite the lack of actual predictions on my mothers part. In my case, you get vivid descriptions of my mischievous one-year-old character.

Fast forward twenty three years and cast a look at my life and you'll find that I never became an engineer, despite remaining inquisitive about how things work. I'm not obsessed with trains and Fireman Sam anymore. I still love my food, especially cakes and chocolate. I still sing a lot and my repertoire is large, even if regrettably it no longer includes Kylie Minogue.

Singing is my favourite pastime; I see it as my biggest talent. Like any talent though, you have to have courage and belief in what you can achieve for it to actually mean anything. I never had the balls at school to form a band; I never really knew I could belt it out like the best of them until confronted by the need to be heard over the feedback in a grotty rehearsal room under Waterloo Bridge. My first band, Dirty Hands,

released a 7" single and performed a session on quasi-national radio XFM. It went down well but we were hardly reinventing the wheel with our frenetic pop numbers. My latest band, Al Cool and The Stranger Wines has far more potential. Our tenth performance as a six piece took place at Glastonbury Festival earlier this summer. Surreal is the only way to describe it. For those of you that don't know, Glastonbury is the largest festival of its kind catering to nearly 200,000 people over the course of a long weekend at the end of June. Once the two-hour gridlock had been circumvented, entering the festival was still complicated as a series of stewards inspected our passes and waved us down a series of backroads. Driving down these quiet lanes was the only time over the weekend where I actually felt I was on a farm. Reality is suspended as a sprawling musical metropolis invades the Somerset countryside.

It often seemed like organised chaos. The one time I failed to follow instructions led to me driving up a hill to a dead end and then having to reverse backwards down said hill as the rain started to tumble. Lesson learnt, I set about amusing myself and taking in some live music whilst my stomach churned in anticipation of the performance on the Saturday afternoon. Everything sounded tiptop in rehearsal and spirits were high. The death of Michael Jackson cast a sombre mood over proceedings, namely as two weeks earlier I had decided my stage outfit would consist of a t-shirt emblazoned with his early 90s image. I never thought it would end up as a tribute. I wouldn't say I was nervous, rather nervously excited. Performing is easy when there's a crowd to perform to. It only becomes

difficult when I see a gap between the audience and myself. Such a divide makes me feel self-conscious, which is the last thing I want. People like to see performers enjoying themselves, not preoccupied by other things. I couldn't tell you how many people were there, the whole thing blurs into one, but they helped me feel at ease and we rocked it. Another first, a festival appearance delivered with style. I hope it isn't the last.

See video footage and download tracks at <http://www.shatterededsatellite.com/alcool>



Have you considered a basement conversion?



To increase your living space and add value to your home

Areas below ground, however dank and mouldy, can be transformed into comfortable modern rooms with many possible uses - games, music, office/study, gym or cinema.

The extra room and increased footage add to the value of your house.

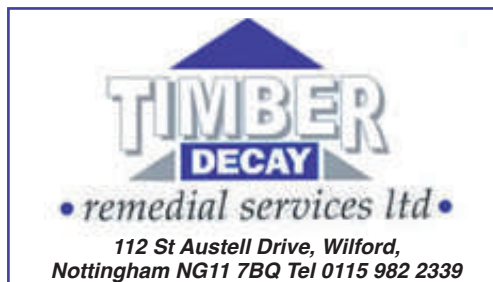
Basement Conversion's specialist team of installers will oversee the entire project including lighting, plumbing, all electrical work and damp proofing. Achieved by using the latest cavity membrane technology and quality materials throughout leaving you with a solution that not only creates space but also adds value to your home.



ABOUT US We are an established damp-proofing company, founded in 1963 and were founder members of the British Wood Preserving and Damp-proofing Association (BWPDA). All our surveyors are CSSW (Certified Surveyor in Structural Waterproofing) and CSRT (Certified Surveyor in Remedial Treatment)



GUARANTEES All work is guaranteed by the company. We have insurance-backed guarantees via GPI (basement conversions - 10 yrs, damp proofing - 20 yrs)



www.basementconversion.com

SPECIALISTS IN BASEMENT CONVERSIONS, RISING DAMP, DRY ROT, WOODWORM

Adult Education courses in Sherwood

We offer you a wide range of courses suitable for adults of all ages and abilities including: Crochet, Felt-making, Paper metal and stitch, Sewing machine skills, Mosaics, Stained glass, Weaving with reclaimed materials, Scrapbooking, Card making, Printing, Mixed crafts, Life drawing, Chinese painting, Watercolour and many more.

Times: Day 9.30am-1.30pm or 2-6pm Evening 6.30 - 9.30pm.

Fees: 60-hour courses £99 (Could be free if you receive benefits)

Venues: Three workshops all on Mansfield Road, Sherwood

New! Skills for Life Courses

Free to everyone. Beginners computers, Grow your own vegetables, Adult Numeracy and Literacy, Clait, Word processing, Plan your wedding, Money matters and lots more.

One-day classes

Silversmith jewellery, Making felt slippers, vintage aprons or frilly knickers, Create your own Christmas cards. Christmas decorations. These one-off classes start at £30. Why not treat yourself.

In our shop

A huge range of textile crafting supplies, sewing machines and lovely handcrafted gifts.

For full list of courses, dates or more information phone Karen or Susie on 07809 158606 or call into THE TEXTILE WORKSHOP at 678 Mansfield Rd, Sherwood, Nottingham

PHOTOGRAPHY TRAINING AND EXPERIENCE DAYS



Line+Light offers you the opportunity to improve your photographic skills in the company of long established professionals in Nottingham. As part of a small group or one-to-one, discover the secrets of really great location photography; portraiture, e-commerce photography or Adobe® Photoshop & Lightroom. We have days out at castles & stunning gardens, or why not try photographing birds of prey along with a professional falconer?

LINE+LIGHT

Get the most from your photography with Line+Light

**For courses Sept 2009 - April 2010
call 0115 9606934 or see
www.lineandlight.co.uk**

Police offer us practical ways to deter burglars ... and it's all free

.....
I am PC 2723 Jeanette Stasuik, the Beat Manager for Mapperley Park, where I have worked for the last four and a half years. Many residents will have seen me out and about or maybe at a public meeting. I have some new security aids to tell you about, that I am personally really excited with!

.....
Nottinghamshire Police are working with the Nottingham Crime and Disorder Partnership to help keep your homes safe and secure. The following aids to security are now available to local residents free of charge.

Shake Alarms

These are to guard your windows. Shaped like a boiled egg cut in half they sense any shock or vibration, activating a 100+dB alarm upon detection. They have a variable sensitivity setting for adjusting to each environment. Simply stick one to a window or window frame for increased protection.

'Smartwater'

As part of our continuing efforts to tackle house burglary in this area, the Police, in conjunction with Nottingham City Safer Homes Team, are offering you SmartWater. This is the latest technique based on DNA for marking your valuables. Property marking deters burglars as they find it hard to sell on. Our trained team are already in your area, offering to mark your valuables with SmartWater.

Since we started using SmartWater in 2001, the results have been amazing. Repeat burglaries, where SmartWater has been used, are low and it is proving to be a successful weapon against burglars all over Nottingham. To find out more, and to make an appointment for one of our team to visit and mark your valuables, please contact us on one of the numbers below.

Immobilise

Immobilise is the world's largest free register of possessions and ownership details and, with its sister site CheckMEND, is the largest database of stolen property and blocked mobile phones.

Immobilise can be used by members of the public and businesses to register their valued possessions or company assets. All account holders, their registered items and ownership details are viewable on the Police national property database. This online checking service is used by all the UK Police forces to trace owners of lost and stolen property.

In addition Immobilise is checked daily by a huge range of recovery agencies and lost property offices. As a direct result of Immobilise there are over 250 cases a week where property is returned to its owners or information collected that assists the Police in investigating activity involving stolen goods.

The Benefits of registration

- Immobilise helps police to identify the owners when lost and stolen goods are recovered.
- Any loss or theft updates you make are immediately available to the Police nation-wide.
- It helps to combat the sale of stolen property by alerting the second-hand trade and by listing items on CheckMEND, the publicly checkable stolen goods database.
- It simplifies insurance claims and police reports with certificates of ownership.

Contact

PC 2723 Jeanette Stasuik on 07792 437306
PCSO 9622 Kiri Prebble on 07702 141844
CPO 9912 Lisa Mickle on 07983 427895
Sherwood Police Stn 0115 9670999 ext 4370

Pocket alarms

We also have a few alarms to give away but these are limited to a small number so you will have to be quick!

These 'Charm' alarms are egg-shaped personal alarms on a key ring which easily attach to a belt loop or bag. They have a little charm which pulls out to produce an ear piercing 105+dB siren. They come in pastel shades or black and look attractive on a key ring.

St John's reopens

IN 1843 St. John's Church on Mansfield Road was consecrated as a place of worship for the residents of Carrington, Mapperley Park and beyond. In 1909 plans were made to re-site the church to Loscoe Mount and monies were raised from the local community. However the First World War intervened and by 1920 increased costs made the project unviable. Therefore in 1923 alterations were made to the existing church.

Last year an ambitious project was embarked on at St. John's and on August 1st this year all the local community were invited to a special day of celebration for the re-opening of St John's Carrington Church and Community Centre.

The rainy day started off at the old hall on Watcombe Circus with a Jazz Band, Lindy Hop and Jive dancers, brunch, bric-a-brac sales, face painting and displays by local groups. In the afternoon a wet but joyful procession wound its way to the church where people enjoyed tea and home made cakes, lit candles and were entertained by more music as they looked around the building.

The church and community centre left people speechless as they

saw what had been achieved. The church has been converted into a beautiful, light, combined worship and community space with the aim of opening the church to the wider community.

The £500,000 costs have been met thanks to donations, grants, selling the old church hall and through local fund raising. About £250,000 was left in the wills of two former Carrington residents, Elsie Ellingworth and Mary Dunnicliff and it was this generosity that enabled the project to go ahead.

The architect has done a superb job in utilising all the space and retaining all the features, skilfully blending them with the new. The community space offers meeting rooms and a kitchenette downstairs with a large hall and full kitchen upstairs. There is a large airy foyer accessed through glass doors, a lift, café area and plenty of toilets - making this a perfect venue for a host of occasions. Room hire charges are very reasonable, details from Maggie Jones, bookings secretary 962 2115.

Everything in the transformed building has been undertaken to the highest specification and the quality



of work is amazing. In the church the organ has been rebuilt and is now sited in an imposing case on the new gallery. This gallery offers the best view of the striking new altar and platform. After a year 'in exile' using the hall and the Vicar's hallway for services, the congregation were thrilled to be back home.

The Christmas services of Midnight Mass at 11.30 p.m. and Christmas Day Mass at 10.00 am should be wonderful in this setting. Mass is held most days; Sundays at 10.00 am with an 'all age' service on the first Sunday.

Visit stjohnscarrington.org.uk for the latest on services and events.

A week of community celebrations is planned for the autumn.

The fundraising committee are still working hard to bring in the rest of the money required to finish the project. If you would like to make a donation or to arrange to view the building please contact Cynthia Hoggett on 960 2143 or 07702 976614.

And if you have not yet visited, Fr Jonathan MacGillivray and the Church Wardens look forward to welcoming you at the new St. John's Carrington Church and Community Centre.

metime offers you a tranquil, spacious massage room in which to relax and unwind.

Pregnancy Massage
Aromatherapy Massage
Thai Foot Massage
Swedish Massage
Indian Head Massage

If you would like to book an appointment or enquire about any of the metime treatments on offer please call Jo on 0115 985 7055 or 0772 909 4070

www.metime.uk.net

£5 discount for Mapperley Park news readers

Feel confident in the hands of an ITEC qualified therapist who is a member of the Complementary Therapists Association and Embody

CTA

Mobile hair stylist

NEW CUTTING EDGE

Hairdressing in the comfort of your own home

Qualified hairdresser with 34 years experience
High standard of work.
References available Lives locally
Holding hairdressing liability insurance.

Telephone 07814 288204

MJ NEWS & DOLLS HOUSES

MICHAEL AND HAYLEY JOHAL

Beautiful dolls houses

Furniture and accessories

Fantastic value! Great choice! Great fun

10% off a Dolls House

Bring this advertisement.
Please speak to Hayley or Michael

Newspaper delivery before 7.30am

Throughout Mapperley Park and Carrington

7 days a week

CARDS-MAGAZINES-LOTTERY-STATIONERY

347 Mansfield Road, Carrington
Tel 0115 844 0222

Don't forget old fashioned Seasonal flu!

THIS year we have been bombarded with information about Swine flu. With so much publicity about this new strain, many people may forget the dangers of old fashioned 'Seasonal flu'. The sad fact is that Seasonal flu and its complications kill hundreds of people in the UK every year.

Each year vaccines are developed to give some protection against Seasonal Flu and these are normally administered to the elderly and the vulnerable through the NHS. Around 70%-80% of people who have the jab do not get Seasonal flu and the rest who do get it generally suffer a much milder version.

Most people do not qualify for this vaccination on the NHS and, increasingly, many are choosing to have it done privately. These include people who care for elderly or sick relatives, the self-employed, people living in large families or communities and anyone in daily contact with large numbers of people.

The Filshie Clinic in Sherwood, in conjunction with Nottingham Healthcare Services Ltd, has identified this issue and has reserved a stock of Seasonal flu vaccines. The clinic will have vaccination sessions on Friday evenings and Saturday mornings administered by qualified Nurse Prescribers in accordance to NHS Guidelines, at a cost of £14 per vaccination.

Nottingham Healthcare Services Ltd also offers an onsite vaccination service to companies where offices or factories are visited at a prearranged date to vaccinate the staff. Statistics show that influenza is one of the major causes of illness and absenteeism among working adults.

Phone 0115 962 5888 to book an individual appointment at the Filshie Clinic, 448 Mansfield Road. www.thefilshieclinic.co.uk

For company bookings phone

Do you have a damp cellar?

How our cellar was transformed into an exciting additional room

BY David Podesta

LIKE many people in Mapperley Park our house has a cellar which we used for storage. However, it was not ideal due to the damp penetrating through the floor and walls and the

the realisation we could have more space and add additional rooms. A subterranean music room with great sound insulation, a children's den, gym or a home cinema room were just a few options we considered.

The foundations of our house lie directly on the sandstone rock which proved to be good news when

He also confirmed we could remove the non-load bearing internal walls of the cellar. We planned to remove the walls and excavate the rock to provide a room measuring 4 x 4 metres with 2.1 metres headroom. We would use the old coal shoots into the cellar to provide daylight, ventilation and an emergency escape, as required



Our old cellar showing one of the coal shoots



Partially excavated cellar



Completed cellar converted to a cinema room

limited head room. We decided to investigate our options to make better use of the space, initially to improve the storage conditions. However, our plans quickly changed with

a structural engineer confirmed that we could excavate down into the rock to improve the headroom of the cellar without the added cost of having to underpin the foundations.

by planning but hopefully never to be used. We asked a company specialising in conversions to do the work and they started in September.

Thankfully most of the mess was confined to the cellar; the bricks, rock and sand excavated went out through the coal shoots minimising the disruption in the rest of the house.

Twelve Weeks

Once the preparation work was complete the next job was to waterproof the cellar. This was accomplished using polyethylene cavity drain membranes with an aqua drain and sump system to pump into the foul drain any water that hits the membrane. Looking like tough large bubble-wrap it covered the floor and walls to create a water and vapour impervious lining. Properly maintained (annual sump pump service) this should last the life of the structure and has a 10 year guarantee. Insulation and a concrete floor are then followed with more traditional plaster board and skim with plaster. Our room was decorated and ready for use 12 weeks after we started.

We have gained an exciting additional room that has a real wow factor and even in the current climate has added value to our property over and above the cost of the conversion. We have lost a damp cellar used to store unused furniture and Christmas decorations. The furniture has gone and the Christmas decorations? Well they have moved to the loft waiting for the next project!

PAINTING & DECORATING to the highest standards

Contemporary & Traditional



Gordon Bates & Son
Tel. 0115 952 5438
Mobile. 07941 285509
34 Gedling Rd, Carlton, Nottingham

Small Ads

Residents' advertisements in this column are free. Send ads for March issue by 1st February 2010 to one of the editors (see page 2) or 18a Cavendish Cres North, NG7 1BA or email walker.ce@virgin.net

EBAY HELP Looking for a tutor to help me put items on Ebay. Can anybody help? Please contact Mapperley@trent.plus.com

BEAUTIFUL VILLA FOR SALE In charming village of La Motte d'Aigues near Pertuis and Aix en Provence. 3/4 bedrooms, dining room, lounge, kitchen, large office/study area on lower floor. Double glazing, air conditioning. Wonderful roof garden. € 245,000 or open to exchange. Ring 0115 947 0071 for information

TUTORIAL BOOKS FOR SALE Selection of - for GCSEs and A Levels. For details email Mapperley@trent.plus.com

ANY PROBLEMS with Nottm City Council please ring 0115 9152000

CLEANER is looking for work in Mapperley Park. References. Please call Kate on 07749 877407

LARGE MIRROR wanted, about 4/5ft (125/150cm) high, 3/4ft (90/125cm) wide. Please call 0115 947 2485

Services for House and Garden

Hire *quality* tableware for your party or event

An opportunity to hire elegant porcelain crockery, crystal glassware and contemporary cutlery

All at competitive prices with free delivery in Mapperley Park

And for a small extra charge you can return it all unwashed!

NOTTINGHAM QUALITY TABLEWARE HIRE
Tel 07595 545278 Email info@nottstableware.co.uk
or visit www.nottstablewarehire.co.uk

Joinery & Building Contractors

Lilley

Contractors to: Local Authorities, Housing Associations
Schools and Universities

- Full range Building Services • Purpose made Joinery
- Restoration Specialists • Free Estimates

Should you require a quotation or further details concerning this company, please contact the office on the following:

P.J.Lilley Ltd, 39/39A Beardsall Street, Hucknall, Notts NG15 7RJ
Tel 0115 963 4230 Fax 0115 964 0176
Email info@pjilleyltd.co.uk

RE-UPHOLSTERY SPECIALISTS

TRENT UPHOLSTERIES LTD

Master Upholsterers Est 1953

Visit our showroom/workshop and inspect our workmanship and pattern range
Good friendly advice Easy parking

Trent House
Croydon Road/St Peters Street
Nottingham NG7 3DS
Tel: 0115 978 6699
www.trentupholsteries.co.uk



PAINTING and DECORATING

We are local painting and decorating contractors established in 1960

References from other Mapperley Park residents

J MULLEN

6 The Point, off Magdala Road
Tel 0115 962 5210 Mob 07974 718159/07962 367209

DRIVE-IN DRY CLEANING

Drop in the morning, collect on your way home

Drive in Monday to Friday 8am to 5.30pm Saturday 8.30am to 12.30pm



FREE COLLECTION AND DELIVERY SERVICE
throughout Nottingham

NATIONAL DRY CLEANERS, Winchester St, Sherwood Tel 960 6944. Also at Main Road, Radcliffe on Trent www.national-drycleaners.co.uk Email ajr@national-drycleaners.co.uk

CURTAIN VALETING

Taking down, complete valeting service, rehanging

SOFT FURNISHINGS

Duvets, covers, throws, cushions

SHIRT SERVICES EVENING & BRIDAL WEAR

DELUXE SERVICE - hems restitched, buttons etc.

Did you enjoy this newsletter?

If so, please subscribe to the Association - we need more members.

Publishing *Mapperley Park News* is just one of the Associations many activities. The more subscribers we have, the more we can do for Mapperley Park and its residents.

The subscription is only a small sum each year. We need your support - join now using the form below.



Private Road holds annual lunch party

ON the morning of Sunday 7th June we waited with bated breath for the weather forecast as Private Road residents were hosting their annual lunch in the garden of Tim and Sally Cullen.

Sadly the rain came down and residents and guests were diverted to St Judes hall along with the splendid buffet prepared by a wonderful team of ladies.

There were over 80 people at this successful event and it proved to be a very enjoyable way of getting to know your neighbours on Private Road.

ANNUAL SUBSCRIPTION 2009

If you are paying £3 by cheque or cash fill in Form 1. To pay by Standing Order fill in Form 2. Return both forms to David Towers, Hon Treasurer, 31 Lucknow Drive Mapperley Park, Nottingham NG3 5EU. He will forward the SO form to your bank.

The small subscription fee of £3 per household covers the minimal administrative costs of operating the Association and provides a modest surplus that is transferred to reserves to provide for the occasional costs of expert advice on exceptional issues.

FORM 1

I apply for / wish to renew membership of the Mapperley Park Residents' Association.
I enclose my subscription of £3 for the year 2009.
(Please make cheques payable to MPRA)

(Capital letters please)

Name

Address

Post Code Tel.....

If you are able to help the Association in any way, e.g. by offering expertise, joining the Committee, or delivering leaflets, please send a note with this subscription or contact a member of the Committee

FORM 2: STANDING ORDER MANDATE

Annual subscription to Mapperley Park Residents' Association

TO:

(Your Bank).....Bank Branch

Address

PLEASE PAY TO: Barclays Bank plc, 2 High Street, Nottingham NG1 2EN A/C No 10609080 Sort Code 20-63-25 for the credit of MAPPERLEY PARK RESIDENTS' ASSOCIATION, the sum of £3.00, immediately for the year beginning 1st January 2009, and to pay £5.00 on 1st January each subsequent year until further notice from me/us.

DEBIT MY/OUR ACCOUNT

NUMBERSORT CODE

SIGNED DATE

NAME

ADDRESS

If you are able to help the Association in any way, e.g. by offering expertise, joining the Committee, or delivering leaflets, please send a note with this subscription or contact a member of the Committee