

Mapperley Park

news

Mapperley Park Residents' Association Newsletter
No. 10 September 2006



Nottingham City Council
Mapperley Park Residents' Association

PUBLIC MEETING

Wednesday 18 October
7.00 pm
at
St. Jude's Church Hall

To discuss the new draft plan
for the management of the
Mapperley Park and Alexandra Park
Conservation Area

For full details and where to see the
plan see page 6

Dining with the Queen

In April Mapperley Park resident, Daphne Dickinson (left), had lunch with the Queen at Buckingham Palace and the occasion marked both their birthdays. The Queen had invited 99 people who were born on the same day as her, as part of her 80th birthday celebrations. Lunch was served in the palace ballroom, with the main course of filet de boeuf bordelaise being served on C19th solid silver plates normally reserved for state banquets. See p10

CONTENTS

Conservation Area Plan	6	Plant Exchange	7
Chairman	3	Police - Chellie's Column	15
Gardening Group	5	Residents Dine at Woodborough	11
Local History Group	9	Roundabout Blooms	16
Planning - A Personal View	9	Where are the Men?	7

WIN! WIN! WIN! Inside, you can win **DINNER FOR TWO** in the Chino Latino competition (p12) and a **CASE OF ORGANIC WINE** in River Nene's prize draw (P19)



Woodborough Hall

Directory of Useful Contacts

MAPPERLEY PARK NEWS

Editorial Team Suma Harding e-mail: srh@trent.plus.com
 Sharon Jamieson email: jamfamfive@aol.com
 David Towers 962 1513
 Sally Morant 960 2626

Correspondence to The Editors
 c/o 31 Lucknow Drive, Mapperley Park, Nottingham NG3 5EU

Advertising/Production Christine Walker 947 2485
 18a Cavendish Crescent North, Nottingham NG7 1BA

THE MAPPERLEY PARK RESIDENTS' ASSOCIATION

Chairman Carole Ayre 962 2004
 Secretary Elizabeth Sanders
 Treasurer David Towers 962 1513
 Membership Marcus Wakely 960 9038
 Traffic David Cummins 969 1106
 Trees David Podesta 960 3029
 Crime and nuisance Tony Stock 960 4349
 Social Events Suma Harding email: srh@trent.plus.com
 Other members David Pemberton 844 9894
 Paul Watts 960 9964

Neighbourhood Watch and
 representing Private Road Lesley Baker 960 9572
 Representing Elm Close Peter Henson 960 7561

SOCIAL GROUPS

Mapperley Park Tennis Club, Carisbrooke Drive 969 1278
 Membership Secretary Cynthia Lyndo
 Magdala Tennis Club, Magdala Road 966 3047
 Club Secretary Jenny Wheelhouse
 The Nottingham Bridge Club, Mansfield Road 960 7992
 Mapperley Park Book Club Stasia French 910 7644
 (Lively discussions about books of your
 choice; meets monthly at residents homes)

FOR YOUR INFORMATION

Sherwood Contact Centre

581a Mansfield Rd, Sherwood
 Tel: 960 4050 Inc answerphone

Opening hours: 10.00am – 3.00pm

Email: info@sampnw.co.uk

'Crime does not flourish in a community that cares!'

● Report incidents to
www.sampnw.co.uk

● CCTV is coming to Sherwood

● Ideas for Youth provision in
 Sherwood – ideas now being looked at.

● Burglary Reduction Team

Any problems ring 915 6180

DOCTORS

Dr Andrew Flewitt and Dr Mona Vindla 985 8552
 Sherrington Park Medical Practice, 402 Mansfield Road
 Dr Mark Stevens 841 2022
 Mapperley Park Medical Centre, 41 Mapperley Road
 Dr D G Black & Partners 985 8822
 Sherwood Health Centre, Elmswood Gardens, Sherwood

DENTISTS

Anil Chand, Mapperley Park Dental Care 962 4607
 18 Mapperley Road (NHS & Private)
 Dr Andrew Cluskey & Dr Chris Stead (Private) 960 2717
 Tavistock Drive Dental Care, 1 Tavistock Drive
 Brian Snape, Mapperley Dental Care 960 5282
 431 Woodborough Road (NHS & Private)
 Dr Mistry, The Grange Dental Centre 962 3432
 480A Mansfield Road, Sherwood (bottom of Private Road)
 Mrs A W Rae, Holly Tree House Dental Practice 962 2882
 334 Mansfield Road

CHURCHES

St. Andrews C of E, Chestnut Grove 960 4961 & 912 0098
 Main services Sunday at 10.15am and 7pm

St Augustine's Catholic Church, Woodborough Road 953 9839
 Principal Mass times: Vigil Mass Saturday at 6pm
 Sung Mass Sunday at 11am

St John's C of E, Mansfield Road, Carrington 962 1291
 Main service Sunday at 10am

St Jude's C of E, Woodborough Road 985 6131
 Sunday: Traditional service 9.15am
 Contemporary service with children's groups 11am
 Informal service 6.30pm

Sherwood Methodist Church, Devon Dr/Mansfield Rd 962 2616
 Main services Sunday at 10.30am and 6.30pm

YOUR LOCAL COUNCILLORS

Emma Dewinton (Lab) 960 8198
 Michael Edwards 915 5050 or 07876 203352
 email michael.edwards@geo2.poptel.org.uk
 Mo Munir 969 3126
 Surgery: Outside Co-op, Mansfield Rd. Third Saturday of every
 month 10.30-11.30am (except August & Bank Holidays).
 Telephone for advice or appointments outside usual surgery times.

COUNCIL NUMBERS

Anti-social Behaviour	915 1135	City Information	915 5330
Cleansing Services	915 2000	Council Tax	915 4851
Abandoned cars	"	Trees:	
Dumped rubbish	"	Street	915 2264
Street cleansing	"	Protected	915 5414
Dog Warden	915 6223	Education	915 0706
Pest Control	915 6170	Drains	915 6650
Highways & pavements		Library	915 2828
(cracks & potholes)	915 6156	Planning Permission	915 5426
Building Regulations	915 5358	Pollution Control	915 6410
Public Health	915 6798	(smoke emission & noise)	
Social Services	915 5500	Street Lights	915 2211
Trading Standards	950 7910	Drugs	915 1956

If you cannot find the service you require listed above then
 try the City Council switchboard on 915 5555

POLICE

Station 967 0999
 Beat Officer, PC Steve Harding 07792 437302
 Police Community Support Officer
 Prostitution Task Force 967 0555 ext 4249
 Paul O'Dwyer and Gary Morphus

Whilst every reasonable care is taken, neither The Mapperley Park Residents' Association nor its agents can accept any liability for any inaccuracy or any loss or damage arising from any articles, advertisements or other items in this publication. The views expressed in this publication are not necessarily those of the Association.

Letter from the Chairman

A LOT has happened since our last news letter. Our AGM took place in April. The Committee has made representations in relation to a number of planning applications and other issues of concern to residents.



The Council produced its summary of the responses to the Conservation Area Appraisal consultation process, and a draft Management Plan has been approved for public consultation. The monthly meetings at the Ukrainian Centre continue to be a great success and, as you will read, the Garden Club is thriving.

Planning issues, and crime/antisocial behaviour were the key concerns raised by those of you who attended the AGM. John Collins (Leader of the Council) and our three Councillors, Emma Dewinton, Michael Edwards and Mo Munir, all attended and they were able to follow up on some of the concerns of individual residents after the meeting. Our Beat Officer, Jeannette Stasuik, provided an encouraging report on crime statistics and the area continues, as in previous years, to produce low crime figures.

The demand for new homes is putting Mapperley Park, with its large houses and

gardens, under increasing development pressure. Many of you voiced concerns about this at the AGM and over 80 of you responded to the joint consultation process carried out by the Committee and the Council. The draft Management Plan fully supports the key concerns that you expressed. I am particularly pleased to report that the Council supports the proposal to extend the boundary of the conservation area to Mansfield Road (so as to include the Park Inn and thus bring that site under stricter control) and also to include the properties on the south side of Mapperley Road between Park Avenue and Woodborough Road and the properties on Albert Road, Denmark Road and Dagmar Road (in Alexandra Park). The plan reflects concerns about loss of trees, garden space, family accommodation, car parking problems and loss of boundary walls, as well as unsympathetic development (by individual homeowners as well as by developers). It provides a very clear policy statement that we must all take into account when considering alterations to our own homes as well as when considering applications submitted in respect of neighbouring land. For example, at one extreme, demolition of any pre 1939 building will be resisted by the Council (very important, if we are to protect the "garden setting" of Mapperley Park and Alexandra Park), as will the demolition of any historic Bulwell stone or brick boundary walls, and, at the other extreme, the raising of the height

of existing walls where this would be out of character with the remainder of the street and have a visually harmful impact upon the area will also be resisted. I urge you to read the announcement from the City on page 6 providing more information about the draft Management Plan consultation process and details of a public meeting, and to support this effort to preserve our environment, not just for ourselves but for those who will be here in 100 years time.

With that, I make a call to arms. Can you help us to protect Mapperley Park?

Detailed attention must be paid to individual planning applications, giving thought to all aspects of proposed development. Copies of applications arrive by e-mail every month and objections must be submitted within 21 days. The Committee does its best to deal with these but we have insufficient resources to keep pace. I believe that it is essential, if we are to be effective in protecting this area from inappropriate development, to set up a planning sub committee whose members will be able to share the workload and to offer a range of opinions, experience and knowledge of different corners of Mapperley Park. If you would be willing to help in this very important task, please contact me (see details on page 2 or e-mail me at cayre@btopenworld.com).

CAROLE AYRE

Lunchtime Piano Recital

(followed by refreshments)

at

St John's Church Carrington

on

Saturday 23 September

Pianist Martin Jacoby

Programme

Haydn Beethoven Chopin

Proceeds to go to Methodist Hospital in Kenya (supported by Devon Drive Church) and Working with Aids - The Diocese Of Natal (supported by St John's Church)

Tickets £3.50 Available on the door

Contact: Lesley Baker 9609572, Dr. Wood 9111388 Jacoby Family 9106689

Retired? Working from home?
Child free for a few hours?

Would you like to meet new people
and share ideas and new interests?

Mapperley Park Coffee Mornings

2nd Monday in the month,

10.30am - 12 noon

Ukrainian Centre, Mansfield Road

Next Meetings

2006: September 11, October 9, November 13

2007: January 8, February 12, March 12



Supplying
Nottingham
with stylish
high quality
furniture
since 1885.

9am - 5.30pm
Monday - Saturday

151 Huntingdon
Street, Nottingham.

Telephone (0115) 953 6000

FREE CUSTOMER PARKING

www.hopewells.co.uk

HOPEWELLS
The furnishers since 1885



The Garden Group on their visit to Bridgemere Garden Centre

THE GREAT DAY OUT

8.15am on 9th June in Carisbrooke Drive and not a tennis racket in sight! Plenty of joyful anticipation, however, and the Garden Group were duly off on time to Bridgemere Garden Centre in Cheshire. It is reputedly the largest in the UK at about 25 acres and we soon saw why this place - almost off the map with no bus or train services - had its great following: but coffee first. Then outside, where one had to revolve at least twice to take it all in; absolutely vast and cleverly laid out to include gardens of various kinds and millions of plants in their

ranks and files on moveable trolleys. We were told by our guide that all the original topsoil had been replaced by the originator, now 70, probably in need of a rest and seeking retirement at a price! Many of us bought stuff for the hold of the coach after our very pleasant lunch, following which we were off again, retracing our steps by a couple of miles to The Dorothy Clive Garden.

Here we saw what a skillful plantswoman and her noble helpers made of a great variety of plants and trees in land which was heavily undulating. The heat in the open was almost unbearable but the brochure told of the garden as intimate and informal ... embracing a variety of landscape features, including a superb

woodland garden, an alpine scree, a damp garden and spectacular flower borders, so we all plodded on! If anything that description was an understatement. No-one could have expected to see more and, following afternoon tea, several of us were to be found near to leaving time at the very cleverly planted lake, on the more shady side of course, chatting or watching dragon-flies and damsel-flies. The water lilies were superb as well. Then it was back to the coach and we were all very pleased to have a gentle run to the tennis courts in fine time. Things can't go on being better and better! Thanks a million to Lorna, as usual, and to everyone else who helped make this another memorable occasion.

VIC SAWLE

Latest news from the Gardening Group

We now have 50 members and we are flourishing after our first year. How has such a super plant grown from that small seed planted in July 2005? Obviously the answer lies in the soil and the enthusiasm and generosity of our members!

Here is a quick resume of our last six months activities:

* In January Sheila and Malcolm Reece hosted an afternoon Gardening book club where members showed their favourite gardening publications.

* The visit to Hodsock Priory in February to see the snowdrops was blessed with good weather.

* Brenda Jarand kindly hosted a talk in March about Sun and Shade, Plants for Your Garden by Jackie Blood, which was most informative.

* The April visit to Felley Priory was chilly but the warm welcome from The Honourable Mrs Chaworth-Musters and the opportunity to see such a beautiful garden made it a lovely afternoon.

* In May we visited Catherine Corders beautiful garden to admire the rhododendrons.

The pouring rain did not deter the intrepid

members from exploring the spinney and thoroughly enjoying the afternoon.

* June was our coach trip to Bridgemere Garden World and the Dorothy Clive Memorial Garden. The most beautiful weather and good company made this a super day out.

We now have trips planned for the Beth Shalom Memorial Garden in July, a meeting to discuss future events in August, a guided visit to the Nottingham University gardens in September and a visit to Teveral Manor in October. During the winter we will be holding a Gardeners Question Time evening, a visit to a garden centre and a talk.

In 2007 we will be visiting the Hunger Hills allotments and Trent College for a Tree Walk. We are particularly keen to visit local gardens so if you would like to share your garden with us, for a couple of hours in 2007, please let me know.

If you would like to join us and share in our monthly events, please contact Lorna Weir on 9603897 or email loraweir2002@yahoo.co.uk. We welcome new, experienced and armchair gardeners alike! LORNA WEIR



Tree Surgery and Arborist Service

- Planting
- Pruning
- Reduction
- Felling

Removal of all waste

For a FREE QUOTATION
 Call Matthew Adams
 Telephone: 0115 840 8342
 Mobile: 07966 691867

Draft management plan now available and public meeting to be held in October

From
City of Nottingham
Development

THE recent consultation on the Conservation Area Character Appraisal raised a number of planning issues regarding development within the Conservation Area. A draft management plan has now been prepared in response to these planning issues. This management plan sets out the development control approach to guide new development within the Conservation Area that can be used by residents, developers and Council officers.

In particular, the management plan seeks to establish guidelines to retain and protect the older buildings in the Area; to retain and promote family housing; to control extensions to existing properties so that they remain in keeping with the Area; to make adequate provision for car parking whilst protecting the local landscape; protecting traditional boundary walls and mature trees; and, to protect open spaces particularly large mature garden areas and existing sports grounds.

A copy of the draft management plan will be available on the Councils web site as from 1st September at www.plan4nottingham.com

and copies will also be available for inspection at the Council offices and at St. Ann's Library and Sherwood Library.

The Council will also be holding a public meeting to discuss the management plan and this will take place on Wednesday 18th October at 7.00 pm in St Jude's Church Hall.

Comments on the management plan should be received by the Tuesday 31 October 2006 and can be sent to us by email to development.control@nottinghamcity.gov.uk; or by post to City Development, Exchange Buildings, Smithy Row, Nottingham NG1 2BS.

The Waste Land

by Brian Trotman

At present, living opposite what was in my childhood known as "The Waste Land", I have endeavoured to seek out old family photos of the area but have failed to dig up any which portrayed the total absence of building development which was standard in my early years. I am now living at 23

Mapperley Hall Drive which, before and during the years of World War II, faced onto this "Waste Land". The space is now occupied by Nos 24 & 26 which were erected in the post war years, much to the disappointment of the juvenile fraternity. Obviously we had moved on in years at that stage and the building of a house

was in itself a new challenge and although we resented the loss of our adopted play area, exploring the part built structure was a dare not to be missed. During the war, before any permanent building took place on the site, there was a single construction supplied by H.M. Government viz: a concrete and brick A.R.P Warden Post to which my father and other Mapperley Park volunteers used to arrive at during air raids and deliberate over area cover and phone manning throughout the duration of the raid. Dads Army immediately comes to mind - a table, two chairs, a phone and a low wattage light bulb hanging from the ceiling. I can still see my father in his navy boiler suit and ARP Warden helmet leaving the house at 95 Cyprus Road and telling us all to go to the shelter at the side of the house. (Incidentally, the shelter is still

there and is used as a repository for garden implements) The Warden Post was demolished when No. 24 was built, but up until that time, the whole 'Waste' area was one of great relaxation for local youngsters as it was covered with trees and bushes, ideal for hiding within and climbing and only yards from home. Incidentally there was a much smaller piece of 'Waste Land' at the corner of Carisbroke Avenue and Cyprus Road on which 83 Cyprus Road now stands. This piece of land had no trees, only brambles and the odd shrubs but was still chosen to be the site for V.J Day celebrations in August 1945. While some neighbours produced fireworks from some secret cache, a still untraced prankster threw a German incendiary bomb onto the bonfire but it failed to ignite and the panic subsided eventually.

About the photograph

This photograph was taken on the lawn at 95 Cyprus Road in 1937. The house in the background is 'Clevelys' on Old Hall Drive (named after the owner's wife's home town in Lancashire) beyond that is 23 Mapperley Hall Drive, where I am now resident. The area between the house 'Clevelys' and the telegraph post was the 'Waste Land' In the photo I am wearing my school beret and my brother Michael is in the uniform for the Dolphin School which he attended until both of us were sent away to the countryside in 1940 to escape potential bombing.



MEN OF MAPPERLEY PARK WHERE ARE YOU?

If you are free between 10.30am and 12.00 on the second Monday of the month, come and meet fellow Mapperley Park residents over a coffee (or something stronger) at the Ukrainian Centre on Mansfield Road opposite Mapperley Hall Drive.

This is a pleasant social

gathering of local residents but we are light on men and such deserving subjects as the state of English rugby, cricket, computers, local affairs, opera, etc, etc. are not given sufficient airing.

With you wife, partner or on your own, you will be very welcome.

Plant exchange pilot scheme

HAVE you ever felt guilty about discarding a healthy plant simply because it no longer fits in with your garden design? Or have you admired plants in other people's gardens but been unable to find them in the garden centres?

If so, you might be interested in the 'pilot' Mapperley Park Gardening Exchange scheme. A list will be kept of those people offering or wanting plants and will be circulated regularly. It could be extended to include gardening tools as well. Participants will then contact each other directly. For further details please email Anne Booth at garden@aboorth.wanadoo.co.uk or write to her at 20 Esher Grove, Mapperley Park, NG3 5DR.



A. Filshie Osteopaths
GOSC Registered Osteopaths

Back and Neck pain
Sciatic pain
Cranial Osteopathy
Sports injuries
Joint and Muscle pain
Arthritic pain
Acupuncture

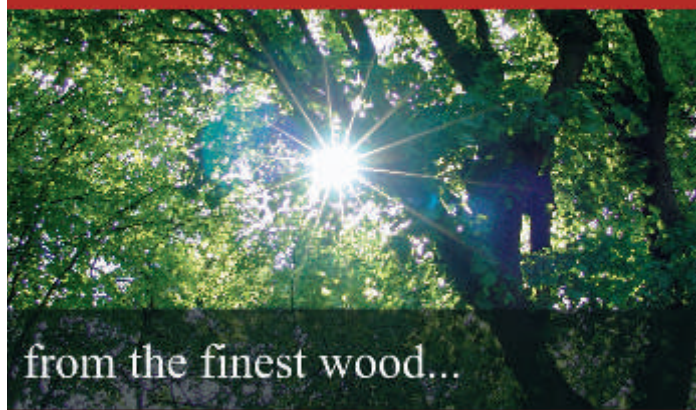
www.thefilshieclinic.co.uk
488 MANSFIELD ROAD, Sherwood
Tel. 01159 625 888



Mrs A W Rae
Holly Tree House Dental
Practice
334 Mansfield Road
Mapperley Park
Nottingham NG5 2EF
Tel. 0115 9622882

- Dental Treatment Provided in a Friendly, Peaceful, Caring Environment.
- New Patients Welcome Including Children.
- Hygienist Available. Also, Comprehensive Range of Cosmetic Treatments including Tooth Whitening, Metal-Free Crowns, Implant Service.

Davenport



from the finest wood...

A team of talented and passionate individuals dedicated to a common goal of progression.

Constantly pioneering materials and manufacturing methodology to ensure Davenport remains unsurpassed in our technical ability and quality.

You can enjoy as much freedom and control on the design of your furniture as you wish, backed up by the support of experienced and talented professionals.

This together with our dedication to satisfy your needs on every level of your project is the reason the majority of our work is from repeat clients and their recommendations.

...to the finest detail



Kitchens . Bedrooms . Individual Pieces . Studies . Ensuites

Website: www.davcab.co.uk Tel: 0115 9705051
Showroom: 23 St Peters Street, Nottingham, NG7 3EN

.....Inspiring a lifestyle transformation



Neil Sutcliffe

The residential market in Mapperley Park and its surrounding areas has been reasonably good over the past two months although viewings have been down in August as usual due to holidays.

Nina Danylevych and I are responsible for the marketing of residential properties in

Mapperley Park and the surrounding area for FHP City Living. We currently have 39 properties For Sale with a total value of £7.5 million. These include 9 one bedroom apartments, 20 two bedroom apartments through to four, five and six bedroom houses. The prices range from **£89,950** to **£650,000** with 7 properties

under offer. If you would like to view any of the properties we are currently marketing or want a free market appraisal of your own home please do not hesitate to contact either myself on **07917 576 252** or Nina on **07917 576 255**.



Nina Danylevych



The Cedars, 5a Lucknow Avenue

Situated within the desirable residential area, this unique property has been designed and built to a high standard and offers lounge, dining kitchen, utility, study, 6 bedrooms, 2 en-suites and family bath. Delightful gardens. Double garage. **Internal viewing essential!**

Price £595,000



Magnolia House, 25a Magdala Road

A spacious detached property comprising sitting room, dining room, study, attractive fitted breakfast kitchen, utility room, 4 bedrooms with en-suite to master and main bathroom. Loft room. Impressive gardens to front and rear. Double garage. **Internal viewing essential!**

Price £450,000



2 Mapperley Park Drive

A substantial Victorian property with accommodation spanning four floors, comprising 2 reception rooms, study, breakfast kitchen, utility room, 6 bedrooms with en-suite to master, attractive family bathroom and separate self-contained 1 bedroom apartment. **Viewing highly recommended!**

Price £450,000



Brockley Villa, 12 Mapperley Road

A Victorian 3 bedroom semi-detached house comprising kitchen, dining room, downstairs WC, 2 further reception rooms and cellar. To the outside there is a decked area and predominately lawned garden area with electric gates to the front of the property. **Viewing essential!**

Price £310,000



14 Ebers Road

A 4 bedroom, 3 storey mid-terrace period house set within the Mapperley Park conservation area comprising of two reception rooms, breakfast kitchen, bathroom with separate WC and a substantial rear garden. **Viewing essential!**

Price £239,950



Atholl House, 20 Magdala Road

Four sympathetically restored apartments available. All apartments are of individual design with hand crafted bespoke kitchens including integrated appliances, solid oak flooring and luxury bathrooms. To the outside there is a peaceful communal garden and allocated parking. **Viewing Essential!**

Prices from £150,000 to £220,000



5 Ellis House, Mapperley Road

A 2 bed luxury penthouse apartment within Ellis House with accommodation briefly comprising of a contemporary kitchen with granite work surfaces and integrated appliances, a luxury bathroom with under floor heating. **Viewing Essential!**

Price £225,000



8 Mapperley Park Drive

A triplex, 3 bedroom apartment forming part of a Victorian conversion property comprising of sitting room with feature fireplace, dining room with flagstone floor and feature spiral staircase. There is a private courtyard to the rear of the property. **Viewing recommended!**

Price £199,950



Kopa House, Zulla Road

Three 2 bedroom apartments available, set within this period conversion. Apartment 2 is a duplex, two bedroom apartment at £159,950. Apartment 4 is a 1st floor, two bedroom apartment at £165,000 and apartment 6 is a top floor, two bedroom apartment at just £155,000!

Prices from £155,000



8a Mapperley Park Drive

A well presented duplex apartment with accommodation briefly comprising of lounge with feature fireplace, fitted dining kitchen with appliances, 2 bedrooms and a bathroom. The property benefits from a car parking space. **Viewing essential!**

Price £139,950



Apartment F, 3 Magdala Road

A first floor apartment within a conversion which comprises 2 bedrooms, lounge/diner with a separate kitchen. The property also benefits from a parking space. **Viewing essential!**

Price £129,950



10 Lincoln House

2 bedroom, 1st floor apartment set within this purpose built development in the Mapperley Park conservation area. The accommodation briefly comprises of 2 bedrooms with a balcony off the 2nd bedroom, living room, separate kitchen and bathroom. The property also benefits from a car parking space.

Price £104,950



Planning applications in Mapperley Park

A personal view

by David Towers

PLANNING has become an emotive subject in Mapperley Park, noticeably so at the AGM in April. This note gives my personal views on planning and developments in Mapperley Park; it may possibly add fuel to the discussion.

Trees

Some years ago it was almost impossible to get permission to fell or lop trees. However, with a change of staff in the Planning Department, our experience is that all reasonable applications for works to trees are accepted. This is a much more satisfactory situation, as there is no excuse for not making a planning application before the work is carried out, and thus comply with the law.

Other Planning Applications

The general principle of is that the works proposed should be sympathetic to neighbouring properties and should enhance Mapperley Park.

Gardens & Parking

The garden settings of its houses play a major part in the special character of Mapperley Park. So it is strange that, in some situations, no application is required for changes to gardens.

I am concerned when significant green spaces are converted into tarmac or paving. When it comes to cars I would prefer them to be in a garage, as they are out of view and much more secure against theft or vandalism. I would tend to prefer cars being parked in

front gardens than on the road, although the parking area should not take too great a proportion of the front garden.

Facing of Properties

Generally, I prefer houses and other buildings to be brick faced, as this is the material most often used in Mapperley Park. Some houses have a quite attractive combination of stucco and brick. Pebble dash is preferable to plain stucco. My objection to stucco is that with time it deteriorates pieces fall off and it loses its colour. This is unsightly. Similarly, I don't like wood facing as this deteriorates with time. Brick does not deteriorate.

Roofs

Roofs should be sympathetic with those of neighbouring houses and in similar materials. In Mapperley Park, most roofs are red quarry tiles or concrete tiles. Irregular slates are acceptable, but machine made ones look too plain. I do not like windows in roofs as they destroy the line of the roof. Gables can be an acceptable alternative but semi-detached houses with a gable on one side and not on the other is not acceptable. Most roofs should be double pitched or, even better, hipped. Flat roofs should be discouraged and there should be encouragement to replace them with pitched roofs. Single pitched roofs are unusual in Mapperley Park, they tend to be excessively high and so should be discouraged.

Extensions

Extensions should be sympathetic to neighbouring properties and their owners. If a neighbour is proposing a significant extension which will affect your property, please let the MPRA committee know and

we will try to help. We see applications of this type but feel we cannot object unless we get a complaint from a neighbour and we will object to the application if we feel your complaint is justified.

New Build

On entirely new build we are concerned that there are sufficient 'green areas' around the developments and that they are not too close to existing properties.

Major alterations to existing properties

Recently there has been pressure on properties which were constructed post 1945 particularly where the property is relatively small for the total area, including the garden.

There is the view that some of these buildings are of 'little architectural value'. However, 50 years ago, the same opinion could have been expressed about the Edwardian houses in Mapperley Park, and they could have been demolished, thus depriving us of many of our historic houses.

The post 1945 properties have a variety of styles, and if a significant number of them are demolished or significantly changed then this historic aspect of Mapperley Park will be lost. Also, some of these properties have quite large gardens, and the loss of this green space will be to the detriment of Mapperley Park. So let us try to retain these properties and their attractive gardens.

Conclusion

This is just a personal view. MPRA cannot object to all planning applications. We need to decide which are significantly detrimental and make reasoned objections to them.

If you have any comments or suggestions, please let us know.

Mansfield Road Clinic has a Facelift

THE Mapperley Park Clinic, better known for delivering aesthetic improvements to its clients, is undergoing a facelift of its own. In August the clinic closed for two weeks to allow the first stage of this extensive refurbishment.

Planned work includes demolition and rebuild of the entrance and reception areas, installation of a lift, new toilets with disabled facility, shower room and more space to display new products.

The second stage will involve the development of the minor operations suite, to enable the clinic to extend its range of treatments to include single follicle grafting for hair replacement as well as a 'see and treat' facility for all procedures which require local anaesthetic.

The clinic is planning a series of open days in October to allow all interested parties to check out the new look.

Very local history group

ARE you interested in the history of your own area, your street or house?

A local group meets occasionally - about every 6 to 8 weeks - to help each other in researches and to share local knowledge.

Future meetings include:-

Bagthorpe Gardens: A tour on its open day, Sunday, September 10th. Meet 10.30 am onwards at the Gardens, by the green gate on Hucknall Road (just uphill of, and the opposite side to, the

Teasdale Garage). These were among the first local gardens intended to help survival during unemployment in the early years of the Industrial Revolution.

The Geology of Mapperley Park and surrounding area:

Led by Maurice Lock. Monday, October 9th at 7.30pm. 15 Mapperley Road.

To get on the mailing list and for further information, contact Paul Watts at wattses@yahoo.co.uk

80th Birthday Lunch at the Palace

A personal account by Daphne Dickinson of Lucknow Road

THE sun shone on all the octogenarians as we walked up the red carpet into Buckingham Palace to meet Her Majesty at a Champagne Reception in the Picture Gallery.

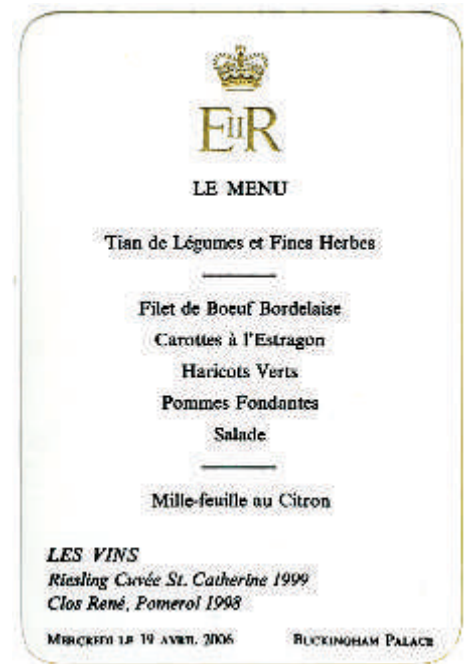


The St John's Ambulance Brigade were in full force and I overheard an amused guest ask if they were at the ready! Happily all went well.

The Queen spoke to many of the 100 invited and their guests before moving to the Ballroom for luncheon. Places were set, about ten to a table. The flowers and silver tableware were wonderful and the Guards Orchestra played throughout the meal.

The space on my right, the footman informed me, would be taken by the Duke of Edinburgh. On his right was a lady from Canada and we shared his attention. He was extremely charming which put us at our ease. I noticed he refused the fine wines during the meal and he explained that he only drank Windsor ale at lunch.

It was a happy and memorable occasion I shall always treasure.



Challenger in need of some work

AS a 15 year old pupil of Nottingham High School, I will be taking my GCSE exams next year. But whilst many of my friends will afterwards be enjoying a prolonged summer of thoroughly deserved relaxation, I have opted to take part in a World Challenge expedition to Vietnam along with 17 other boys from my school. The expedition itself, lasting four weeks, will be planned entirely by the team and even when the expedition is underway, the team will be working largely independently whilst

accompanying adults are able to step in, should anything go wrong. This is a very necessary precaution because the expedition will certainly not be without risks; malaria, typhoid fever and more recently (but perhaps not as wide spread) avian flu are among the major infectious diseases in Vietnam. As we also intend to undertake a one week long jungle trek, we must in the next year learn to work effectively as a team in order to minimise the likelihood of potential hazard occurring.



This adventure will give me a chance to develop leadership skills, to experience an entirely different culture, landscape and climate, and broaden my ideas on the differences between the West and the East.

However, the four week expedition is no more than the culmination of two years of preparation, team building and, most importantly, fundraising. As a part of the World Challenge Scheme, each challenger is expected to raise the money needed to pay for the expedition. Therefore if you would like your babies sitting, your lawn mowing, your car washing or if you have any sort of job that needs doing, please don't hesitate to give me a call as I am happy to offer my services in order to earn some sponsorship and I promise that you won't be disappointed with my standards of work! MADS NEUMANN Telephone 07817 466762 or email m_neu_91@hotmail.com

One of the most important parts of the expedition will be the project phase where the team will be able to help in renovation and construction developments at a Vietnamese orphanage or care home for disadvantaged children. This charity work will hopefully prove very rewarding for the team and also the Vietnamese children who certainly can expect to enjoy some informal English lessons!.

PD HICKLING

ELECTRICAL & IT CONTRACTORS

All electrical work certified & guaranteed.

Electrical Safety Checks

Landlords Certificates

Security Systems

Gate Automation

Sockets, Lights, Showers

Full / Part Rewires

Estimates & Advice with 20 yrs experience.



Electrician

CONTACT PAUL: enquiries@pdhickling.co.uk

Tel: 0115 953 1107 or 07967 771670



L to R: Mary Macrae, Carole Reeson, Ian McKenzie, Judith Naylor, Pam McKenzie, Alan Naylor, Angus Macrae



L to R: Shelia Litman, Gill Bonello, Angela Hughes, Suma Harding

Residents dine out

Angela Hughes

ONCE again the members of the Mapperley Park Residents' Association were able to take part in another great social activity, organised by Suma Harding and Pamela McKenzie.

On Friday, June 16th, sixty-five of us attended a dinner at Woodborough Hall. The owners of this delightful restaurant also own "Punchinellos" in town. The evening commenced with welcome drinks on the lawn of this beautiful house and we were able to take advantage of the lovely summer's evening.

Once inside the hall our meal was served in the privacy of the Function Room. Both the service and the food were of a high standard and the wine and the conversation flowed freely!!!

Three really great prizes had been donated for a Raffle which raised £300 for Macmillan Nurses. Thextons Jewellers in Exchange Arcade donated a voucher for £100 which was won by Louise Smith. Keith Hall donated an appointment in their salon and this was won by Sheila Litman. Woodborough Hall

donated lunch for two which was won by Richard and Gill Bonello.

Once again our thanks must go to Suma and Pam for all their hard work in organising this event.

I would urge everyone who has not yet joined us for one of these occasions to come along when the next one is arranged. It gives everyone an opportunity to meet up with old friends and meet some of the many new residents that have moved into Mapperley Park.



Barbecue on Private Road

About 100 people came to the very successful street barbecue organised by the residents of Private Road and Victoria Crescent on 25th June. A raffle raised £80 for WaterAid.

A Place in the Sun

Many of us no doubt dream of the proverbial place in the sun - a holiday home, a retirement paradise, a solid investment, somewhere we can let out when not holidaying there ourselves to boost our pension income. A couple of years ago Pauline and Simon Chaplin had the dream and decided it was time to actually do something about it to turn the dream into reality! The brief was demanding however because for Pauline that place in the sun had to be on the sea. Not just a sea view, not a few yards away, but on the sea itself. When looking at all the usual suspects though, France, Spain, Italy, etc. it readily became apparent that a frontline to the sea property was frontline to the sea prices and in short supply. Not to be deterred however they widened their horizons and started to think a little more out of the box. The former Yugoslavia and particularly Croatia had once been the hotspot of the Adriatic. The Balkan wars and years of sanctions had put it out of the public picture. Research on the internet led them to visit Croatia and they found out that it was a stunning country, with a long Adriatic coastline with 1200 small islands; it is also chic, sophisticated, warm and alluring. They decided to take the plunge and try to buy but found out that the property purchasing procedure was difficult and in any event they had missed the boat. Croatia had been discovered and property prices were soaring. That coastline dream started to

recede. It was whilst looking at a map of Croatia over a glass of wine in Dubrovnik that they traced the coast down and their fingers pointed to Montenegro. So that's where Montenegro is! Sandwiched on the coast between Croatia, Bosnia-Herzegovina, Serbia and Albania. A tiny country, Crna Gora Black Mountain, a population of only 700,000 with little readily available information on the internet. There was only one thing to do. Go and have a look. It was a real journey into the unknown but what a find.

They discovered a country best described as a cross between New Zealand and Switzerland but with an Adriatic, azure blue coastline, populated in the past by Romans, Venetians and the Ottoman Empire. More latterly the St. Tropez of the 1960s, Sveti Stefan an offshore island of sumptuous luxury where Burton and Taylor regularly stayed and Charles and Di planned to honeymoon before the media found out. The Boka Kotorska a Unesco protected world heritage site comprising a vast inland fjord, small walled medieval towns, awesome scenery, skiing in the winter and best of all a fabulous coastline.

Montenegro was not and is not all roses. Its infrastructure needs some TLC. Whilst not physically affected by the Balkan wars it suffered the results of the economic sanctions. They sensed however a pride in the Montenegrin people. A warmth and a desire to improve. Montenegro had

adopted the Euro. It wants to integrate into the EEC. It was still in a loose union with Serbia. They took the plunge and bought a plot of land which fitted the brief. On the edge of a small fishing village, in a sheltered bay they found the ideal spot. You could dive off the land into a crystal clear bath warm sea. The sun sank into the Adriatic opposite them. The purchase procedure was remarkably uncomplicated and discussions took place in the harbour side fish restaurant over grilled squid and crisp local wine. The idea was a renovation

project but they had bought bare land just to get the location. A major project was in the offing. It got worse when they were advised they could get planning permission for 2 villas on the land. Why build one when you can build 2!!!? Sell one and it will pay for the other! In for a penny. Wind the clock forward and completion of villa one is just happening. They will be taking their first holiday on 1st August. Montenegro has become a hot spot. Get there before everyone else does! You can see Pauline and Simons adventure on Channel 4 in the Autumn..

NOISES OFF

by Sheila Reece

YOU are just slipping into the comfort chair, "tincture" to hand, soaking in warmth and light, when boom, clatter, caw, squawk, screech! The noises off muscle in and obliterate your perfect peace. First the circling chatter of the low flying helicopter, echoed at a lower pitch by the buzzing of the light aircraft. Why can't they teach them to drive somewhere else? A clear case of NIMAS, I'd say. More annoying are the piercing whines and wails from pathetic house and car alarms.

The peas and carrots in this racketsy stew: the two note yowling police car, the hoarse braying fire engine, and the urgent whizz whizz howling ambulance, have to be digested as they are essential ingredients, a necessary life force! Not so the self indulgent cacophony of lawn mowers, tree shredders, grass

suckers, edge choppers et al, they should be rendered dumb from on high ... a lightning strike perhaps? But if all such human racket were stilled, would there then be silence in our green enclave? "Fraid not", in Mapperley gardens peace is held at bay by the all singing, all dancing chorus of wild wild life: shrieking foxes, croaking crows, rattling magpies, crying owls and mewing sparrow hawks. So what to do? Ear Plugs? Fat furry ones could be applied. No, the best solution is re-education, not whimperish tolerance. The inner ear has to be returned to catch the delicate pitch of more civilised sounds - the sighing wind, stirring trees and urgently tingling tonic water bubbles on ice cold tumbler. The noises off fade - Peace at last!!!!

PAINTING and DECORATING

We are local painting and decorating contractors established in 1960

References from other Mapperley Park residents

J MULLEN

6 The Point, off Magdala Road

Tel 0115 952 0732 Mob 07974 718159/07854 246407



Pip

- **INTERNAL plastering, coving**
- **EXTERNAL rendering**
- **HERITAGE works**
- **INSURANCE work**

DYSON PLASTERERS LTD

43 Years experience
City & Guilds passed 1965

Tel/fax
0115 922 6178
Mobile
07973 772461

Beekkeeping in Mapperley Park

In the last newsletter we had a fascinating article on beekkeeping. We would like to express our thanks to Neil Holden for sharing information on his hobby.

Please let us know about any unusual hobby you have.

GREENERGARDENS

Total lawn care service

Who said the grass was greener...

0115 846 5113

Call for your **FREE** lawn analysis
www.greenergardens.co.uk

***GREENERGARDENS** give me such professional service at great value too! I really can't believe the results! We are really pleased and would not hesitate to recommend your services."

Mrs A. Wills Bridford

"Delighted with the improvement to the lawn over the past year - Many thanks!"

Mrs C. Broadbent

Moss Control • Weed Control • Feeding
Pest Control • Scarification • Aeration

PROFESSIONAL TREE SERVICES LTD

- Local Authority ● Conservation areas preservation orders ● 24 Hour call out
- All work to BS 3998 ● Fully insured

Call for a free no obligation quote

Tel. 0115 963 0266 Mobile. 0781 240 5788
www.djctreeservices.co.uk/website

**Trees & hedges
Thinning
Felling
Topping
Tree surgery**



RED CARPET TREATMENT



Nottingham's Favourite




CARPET & UPHOLSTERY CLEANERS

Domestic & Commercial

- Carpet Cleaning ● Upholstery Cleaning
- Fabric & Carpet Protectors
- Curtain & Pelmet Cleaning ● Hard Floor Cleaning

FREEPHONE 0800 034 55 34

PO Box 8367, Mapperley, Nottingham NG3 1WT
www.redcarpettreatment.co.uk
email: info@redcarpettreatment.co.uk



DE VILLE & WOOLLISCROFT

VETERINARY SURGEONS

The Veterinary Clinic
Winchester Street, Sherwood
0115 962 1010
www.devilleandwoolliscroft.com

Arnold Veterinary Centre, 130 Coppice Road 0115 967 1117
Netherfield Veterinary Centre, 12 Chandos Street 0115 940 4474

The surgeries are open at the following times:

<i>Monday to Friday</i>	<i>9.00am – 6.00pm</i>
<i>Saturday (Sherwood)</i>	<i>9.00am – 12 noon</i>
<i>(Arnold and Netherfield)</i>	<i>9.00am – 11.00am</i>

- All medical, surgical and diagnostic facilities available
- Routine surgery also at Netherfield
- Free health checks for puppies and kittens
- Car parking at all branches

In recognition of the special relationship between people and their pets, our aim is to provide a professional and caring service offering affordable and comprehensive diagnostic and surgical facilities enabling our clients' pets to have a long, happy and healthy life.

River Nene



award winning

organic vegetable boxes

delivered to your door

now available

order today! **0845 078 6868** local call

www.rivernene.co.uk



OCKBROOK SCHOOL

The School for Young Achievers



Ockbrook School is amongst the region's leading performers. We offer a learning environment that engenders lifelong achievement – from nursery to senior and beyond.

Student Achievers

100% A Level Pass Rate

(75% A/B Grades)

100% Year 11 gained 5 or more

GCSEs A*-C

(86% A/A Grades)

Open Day

Saturday September 30th 10.30am - 3pm

If you and your child are interested in learning more about the qualities of Ockbrook School and cannot attend the Open Day please do not hesitate to contact our Admissions Secretary to arrange your personal tour of the School:

Ockbrook School,
The Settlement,
Ockbrook, Derby DE72 3RJ
T: 01332 673532
E: enquiries@ockbrook.derby.sch.uk
www.ockbrook.derby.sch.uk

Independent Day and Boarding School Girls 3-18 Boys 3-11 c 500 pupils
Located conveniently just off the A52 between Nottingham and Derby.



GREENHOLME SCHOOL

392 Derby Road, Nottingham NG7 2DX

High Academic Standards

Outstanding Examination Results

Small Classes and Specialist Teaching

Excellent on-site Sports Facilities

Music Lessons

Before and After School Care

Specialist Provision for Dyslexia and Individual Needs

INDEPENDENT CO-EDUCATIONAL DAY SCHOOL

NURSERY, RECEPTION AND PREPARATORY 3-11+

Prospectus available from the School Secretary

Tel 0115 978 7329 Fax 0115 978 1160

Email: enquiries@greenholmeschool.co.uk

Website: www.greenholmeschool.co.uk



"Slick metropolitan restaurant bar . . . with a Latino buzz"

Daily Telegraph



41 Maid Marian Way Nottingham NG1 6GD

t: 0115 947 7444 e: info@chinolatino.co.uk www.chinolatino.co.uk

Now Taking Christmas Bookings

Chino Latino
Modern Pan-Asian Cuisine and Latin Bar

CHELLIE'S CURIOSITIES

by Will Chell, Local Area Commander, City North



Crime on your beat

As you will have seen in the media, there has recently been a lot of talk about crime in Nottingham. I want to take this opportunity to show off my statistical skills and give you an insight into some local crime figures. One in three crimes for your beat area has been detected over the last year. This compares with one in every five crimes for the whole of Nottinghamshire. There has also been a 22 per cent reduction in the total amount of crime since April to date, compared with this time last year.

Cars and sheds targetted

Thefts from sheds are on the increase, with more than twice as many broken into compared with last year. My beat managers are more than willing to give advice on how to protect your sheds from thieves and I would urge you to contact them to help secure your property. Theft from vehicles

is my main concern, as it makes up 20 per cent of all crime in the area. It can be difficult to detect as offenders only take seconds to break in to a car and steal items left on show. Two per cent of these offences have been detected, compared to 33 per cent for all crime. Remove valuable items from display, particularly satellite navigation systems and laptops, and either leave them at home or put them in the boot of your car. Thieves will be less likely to break into your vehicle if there is nothing left on view. An old coat, loose change and even an empty plastic bag can make an offender think there may be something worth stealing.

Your support valued

There is some good news. Since April to date, there has been a 30 per cent reduction in theft from cars when compared with the same period last year. One in five burglaries has been detected over this period, and the figure for burglary offences is down by 18 per cent. We are beginning to see significant results, many of which are down to your vigilance or information passed on through Crimestoppers, your beat managers, police community support officers or even through the website. I would like to thank you for your support to my team when policing your area, it really makes a difference in our fight against crime.

And finally, in the words of Jim Rohn, the author of *Seven Strategies for Wealth and Happiness*, 'If you care at all, you'll get some results. If you care enough, you'll get incredible results.'

DON'T RISK IT!

If you are still spending time in the garden or taking the family on some last holiday outings - here is a quick reminder. Always keep your doors locked and windows closed when you are out of the house whether it's just in the garden or away at the theme park. It only takes a second of your time and could prevent a burglar from simply walking into your home or reaching in through an open window.

RESIDENTS COLUMN

Private advertisements in this column are free. For inclusion in the March 2007 issue please send by 1st February to MPN ADS, 18a Cavendish Crescent North, Nottingham NG7 1BA or to the Editors

YOGA CLASSES Tuesday evenings in Sherwood with British Wheel of Yoga trainee teacher, Grainne Lamb. Telephone 985 7002 or 07759 489 898
HUFFY BASKETBALL net and stand. Suit adults or children. Offers. Tel 07801 457434

BIKES Selection of Raleigh and Giant bikes, must view. Starting price £50. Tel 07801 457434

MJ NEWS AND DOLLS HOUSES

347 Mansfield Rd., Carrington
Tel: 0115 844 0222

Your local friendly newsagent with Michael & Hayley. Outstanding service.

- ★ Cards
- ★ Magazines
- ★ Lottery
- ★ Stationery



NEWSPAPER DELIVERY SERVICE

We do newspaper delivery service throughout Mapperley Park 7 days a week, early morning before 7am.

Also you get 10% off a dolls house with this advertisement

WIN A MEAL FOR TWO WITH WINE AT CHINO LATINO

Award-winning Pan Asian restaurant and Latin bar, Chino Latino, offers unique mouth-watering menus, a heady mix of Latin spirit, lip quivering cocktails and rhythmic music!

Drawing on the delicate flavours of China, South East Asia and modern Japan, the distinctive menus have been developed by head chef, Shinji Nakamura, previously of Michelin-starred London restaurant, Nobu. Customers can choose from a wide range of shushi, dim sum, tempura, grills and thrills. New dishes include pan fried scallops with sweetcorn puree and XO sauce, duck and foie gras dumplings, and char-grilled chicken with Korean barbecue sauce.

The cutting-edge interior has been redecorated and further enhanced with smart contemporary seating. The style is sophisticated yet relaxing with state-of-the-art lighting which creates a sexy ambience.

The restaurant recently added to its many awards by scooping the 'Best Oriental Restaurant' title at the Nottingham Restaurant Awards 2006 and was also runner up in the 'Restaurant of the Year' title.

For more information visit www.chinolatinoco.uk.

For your chance to win a meal for two people with a bottle of house wine at Chino Latino complete the entry form below and post to Stephanie Pearson, Chino Latino, 41 Maid Marian Way, Nottingham NG1 6GD.

MAPPERLEY PARK NEWS COMPETITION

Question: Which Michelin-starred London restaurant did Chino Latino's head chef previously work for?

Answer: a. Hakassan b. Nobu c. Zuma (please circle)

Title (Mr, Mrs, Miss, Ms): _____

Full name: _____

Home address: _____

Post code: _____ Email: _____

Mobile telephone number: _____

Competition closing date is 30th November 2006. All entrants must be over 18 years old



Michael Smith and Jennifer Cruise



Members of the Group and County Council Staff

Mapperley Park Residents support Nottingham in Bloom

ONE morning in July, after weeks of emails and phone calls, a small troupe of members from the Gardening Club arrived at the roundabout at the crossroads of Mapperley Park Drive and Lucknow Drive. Large planters were already in place and, with a variety of spades and trowels, the containers were filled and the job was completed within two hours. We hope you like the finished results.

The planters were made by young offenders at the Attendance Centre and then painted at the nursery at Woodthorpe Grange.

The Residents' Association have paid for the whole scheme including the maintenance of the plants. If you would like to support Nottingham in Bloom and pursue a similar scheme in your area, please get in touch with the Association.

Many thanks to Joanne Smith, Caroline Elmhirst and Glen Springthorpe from Nottingham County Council and the two members of staff who helped us on the day and another thank you to Geoff Lowe from Sudbury Prison.

Special thanks to the Gardening Club too!



Group members with (left) Lorna Weir, the organiser



websters
kitchen specialists

HANDMADE KITCHENS

- 18mm rigid built cabinets
- Made to measure
- Special finishes and sizes at no extra cost
- Realistic prices
- No commission earning salesman
- Showroom by appointment
- Freephone brochure line
- Full fitting service
- Award winning designer
- Guild of Master Craftsmen approved
- Granite, Corian Quality Laminates

01623 432 429
FREEPHONE BROCHURE LINE
0808 155 0854




www.websterskitchens.co.uk

Have you a problem?

The Resident's Association may be able to help you find the answer.

It can sometimes be difficult to deal with local problems such as planning applications, building works, trees, etc.

The Residents' Association is always happy to give advice, and can sometimes help address a concern on behalf of its members in a non personal way.

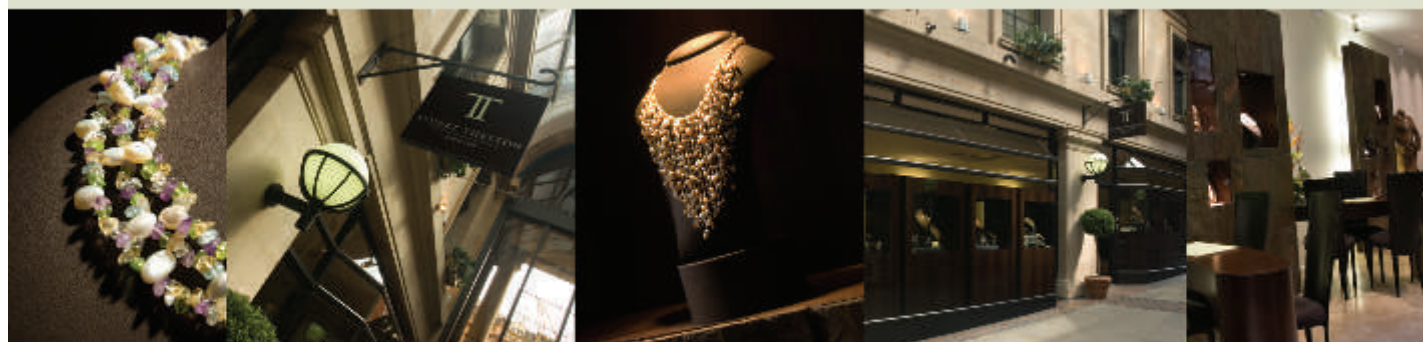
Please contact any member of the committee: names and numbers are listed on page 2 of the newsletter.



STUART THEXTON

JEWELLERY

Magnificent coloured gemstones and fine quality diamonds are our trademark,
with an array of unique collections we have something to suit the most discerning person.
If it's individuality you are looking for, why not pay us a visit.



19-21 Exchange Arcade Nottingham NG 2DD T 0115 988 1821 E jewellery@stuart-thexton.com

MemSaab are pleased
to announce:

Sunday Openings!

From July 30th 2006
5pm to 10pm

Come closer to India...

To make your reservation call
0115 957 0009 or email
contact@mem-saab.co.uk



Best Indian 2006
Best Non European 2005
NOTTINGHAM RESTAURANT AWARDS

"Exceptional Food and Service" puts MemSaab amongst the top
five Curries in the country. *The Observer* GREAT FOOD GUIDE - JULY 2006

12-14 HAID MARIAN WAY NOTTS NG1 6HS T: 0115 957 0009 WWW.MEM-SAAB.CO.UK
Photo: Helen Thompson ©



NOTTINGHAM
HIGH SCHOOL

Open Day

Saturday 11th November
9.30am – 12 noon



Giving boys the
maximum
opportunity to
fulfil their
potential in an
environment
they can enjoy.

Junior School Ages 7-11

Senior School Ages 11-18

**Informal Sixth Form
Open Evening**

Tuesday 8th Oct - 7.30pm

- Meet pupils and staff
- See the excellent facilities

For enquiries and
further details telephone

0115 978 6056

Nottingham High School,
Waverley Mount,
Nottingham, NG7 4ED
Email: info@nottinghamhigh.co.uk
www.nottinghamhigh.co.uk

Attention to Detail

by Sarah Davenport of Davenport Designers and Cabinetmakers

The leafy Arcadian atmosphere of Mapperley Park is a great source of pride to Nottingham. The Conservation Area designation in 1978 demonstrated its worth and hopefully provides it with some protection.

The typical Mapperley Park houses were built between the late 19th to mid 20th Century by a multitude of architects (between 1919-1939, some 67 architects were commissioned to build just over 200 houses, of whom 37 built one house each). This, along with the Vernacular Revival and a movement away from uniformity in architecture generated the marked diversity in design throughout the estate we see today. Styles range from Victorian and neo gothic to arts and crafts, and art deco but the houses do have some qualities in common, above all the quality of construction. Add to that the spacious interiors and the attention to detail in design, plus the likelihood of a large garden, all of which ensure the houses in Mapperley Park estate are highly coveted.



Fig (i)

When a Mapperley Park client approaches us for bespoke furniture the question which almost always crops up is whether or not to keep original features within the room. The diversity of these homes is reflected within by the beautiful fireplaces, decorative plasterwork, elegant windows and capacious storage areas from the past. Most have had modifications - I recently spotted a downstairs cloakroom disguised as a traditional red Telephone Box! Whether recent or old, these features represent the history of a house and it can be fantastic to incorporate them into a scheme. The aim when designing a scheme is to achieve the maximum potential of the room while remaining in harmony with

the client's needs and wants - and the atmosphere of the house. This can involve creating a look with traditional styling to fit the period of the house or by contrasting the look with modern materials and ideas. If at all possible we work with existing features, but if they will definitely limit the function or aesthetics of a chosen design, the best plan is to forfeit them.

In fig (ii) we worked with our client to mix a traditional timber, Cherry, with a modern gloss finish, which along with the contemporary interpretation of the traditional storage areas resulted in a timeless look which will remain current as it matures with the house.

As a team we like to work in Mapperley Park, the creativity in the interiors combined with the quality of build reflect our core values. The spacious rooms with their irregularities and idiosyncrasies make the most of our design expertise and the skills of our master cabinetmakers and give us scope to use the myriad of different materials now available for us to work with.

In fig (i), our clients hoped to retain the fire surround but this would prevent the possibility of installing a Mercury Range Cooker. Other appliances could have fitted but the Mercury was the perfect size and style, so the fireplace was removed and burnished copper alcoves more than made up for the loss.

Fig (ii)



Signing gets babies talking and they have a lot to say

Babies as young as six months are now talking to their parents using signing. Learning this new technique, called TinyTalk, is now available to mums, dads and carers in Mapperley Park and Sherwood. Based on British Sign Language (BSL), TinyTalk allows babies to build up a vocabulary of everyday words, including mummy, daddy, hungry, thirsty and bedtime, and to identify animals such as dog, cat and frog.

TinyTalk Nottingham Central was launched by 34 year old mother of three, Catherine Purcell, from West Bridgford. She explained, "I have experienced first hand the frustration babies feel before they can communicate. If your child would like his/her milk while you are trying to put him to bed, his frustration is only going to increase. Providing babies with the tools to tell you what they want saves a lot of tears. Signing also enables babies to have a 'conversation' and tell you what interests them such as 'train, car, dog'.

Classes run from 10am-11am on Mondays at St Judes Church Hall, Woodborough Road and on Thursdays at Sherwood Methodist Church, Mansfield Road. Drop in on the day (£4.25 per class) or book in advance (£4.00 per class). For details telephone Catherine on 0115 982 2159.

WAVERLEY HOUSE PNEU SCHOOL

Independent Day School, Boys & Girls, 3-11

- Small class sizes
- Proven academic success
- Family atmosphere
- Broad curriculum
- Full/part time nursery
- Before and after school care
- Close to High School Tram Stop
- Year round Holiday Club

"an educational experience of great benefit to each pupil"
(2005 Inspection Report)

1115
978 1240

13 Waverley Street, Nottingham NG7 4DX
Email: wavhousepneu@btconnect.com
www.waverleyhouse.nottingham.sch.uk

FREE COLLECTION AND DELIVERY
EXPRESS SERVICE



Winchester St, Sherwood
Tel 960 6944

Our specialist services include:

◆ **Day & Evening Wear**
Designer wear
Bridal wear

◆ **Shirt Services**

◆ **Curtain Valeting**
Taking down - Complete cleaning & valeting service - Re-hanging

◆ **Soft Furnishings & Duvets**

Quality Dry Cleaning

with a personal touch

ALSO AT: Main Road, Radcliffe on Trent Tel 933 4506 www.national-drycleaners.co.uk Email: ajr@national-drycleaners.co.uk

Recognise a stroke - FAST

A STROKE is a brain attack. It is the third biggest killer in the UK ... but it can be treated.

Urgent admission to hospital and rapid access to treatment can help reduce the number of deaths and lessen the long-term effects. However, the warning signs of stroke can be vague and are often unrecognized, making early identification difficult. By learning the symptoms and dialling 999, you could save a life.

The "Face Arm Speech Test" can quickly identify stroke. Look for the key stroke symptoms:

Facial weakness - ask the person to smile.

Arm weakness - ask the person to raise both arms.

Speech disturbance - ask the person to speak a simple sentence.

Successful year for organic vegbox scheme

River Nene Organics home delivery scheme is now one year old and, to celebrate, they are offering customers, old and new, a chance to win a case of organic wine. The firm now has 2500 customer accounts already opened in the Nottingham area and does around 1000 deliveries each week. This is a testament to the freshness, taste and quality of the produce which is all grown and supplied by the

River Nene Organic Grower Group near Peterborough. Allan and Annette, who run the service in north Nottingham, including Mapperley Park, are delighted with the interest shown in their service and would like to thank their customers for their support.

Win a case of organic wine

To mark the anniversary, River Nene are entering all their

existing customers into a free prize draw with the chance to win a case of 12 bottles of their delicious organic red and white wine selection (retailing at £55). Any new customers who join the scheme before the end of September 2006 will also be entered into the prize draw and will receive 10% off their first order if they quote reference MPN0906 when they register. www.rivernene.co.uk or 08450 786868

A chance to Be restored back to a Human Being

*Relaxed *Pain free *Quiet *Energised
*Free from stress *Well in body, mind & soul

Dörte Tetley HFST PACT

Full Body Massage and Sports Massage Certificate
Indian Head Massage

@ A FILSHIE OSTEOPATHS, 488 Mansfield Road, Sherwood, Nottingham NG5 2FJ
www.thefilshieclinic.co.uk Tel: 0115 962 5888 or 07835 945001



Mountford House

373 Mansfield Road, Nottingham NG5 2DA

Co-educational independent day school
for children from 6 weeks to 11 years

OPEN DAY

Saturday, October 14th 10.00 am – 12.30 pm

- High academic standards
- Small class sizes
- Before and after school clubs and holiday clubs
- Good location close to city centre
- Facilities include a computer and technology suite

Baby and Toddler Unit

For ages 6 weeks to 3 years. Open 50 weeks a year (excluding Bank Holidays). 8.00am – 6.00pm

At Mountford House we provide a secure and stimulating environment where children can develop their potential in all aspects of school life

Prospectus available from the school: Tel 0115 960 5676

Email: enquiries@mountfordhouse.nottingham.sch.uk Website www.mountfordhouse.nottingham.sch.uk

Renovation, Restoration, & Rejuvenation

(looking good for
the future!)



Long awaited clinic refurbishment began 7th August 2006
Please see inside for full story!

All the expertise you need, right here, right now.

- Nottingham's first cosmetic and laser clinic: Registered 1993
- Specialist NHS accredited Consultants leading the way in cosmetic procedures
- Over 100,000 successful procedures carried out since 1993
- Full range of surgical and non-surgical cosmetic treatments
- Leading UK training centre recognised by the Healthcare Commission, BAPS, BAAPS and Royal College of Surgeons
- Nationally recognised expertise available locally

0808 178 0226

www.mapperleypark.co.uk

Non-invasive: varicose veins (laser and surgical), thread-veins, rosacea, laser/VPL hair removal, acne and acne scarring, treatments for lines and wrinkles, collagen, Restylane - Perlane, photo-aging, pigmentation, skin peels and skin care products. All treatments carried out by qualified health care professionals.

Surgical: breast surgery, liposuction, tummy tucks, nose reshaping, face lifts, eye bag removal, mini-lifts. All treatments carried out by NHS accredited Consultants.

Registered by The Healthcare Commission, we assure the highest standards of treatment. Look for the logo.

MAPPERLEY PARK CLINIC 395 Nantfield Road Nottingham NG5 2DL



Registered CO 3300273


mapperley park
clinic